

Bike Network Plan

Cost Estimation Report

November 2024

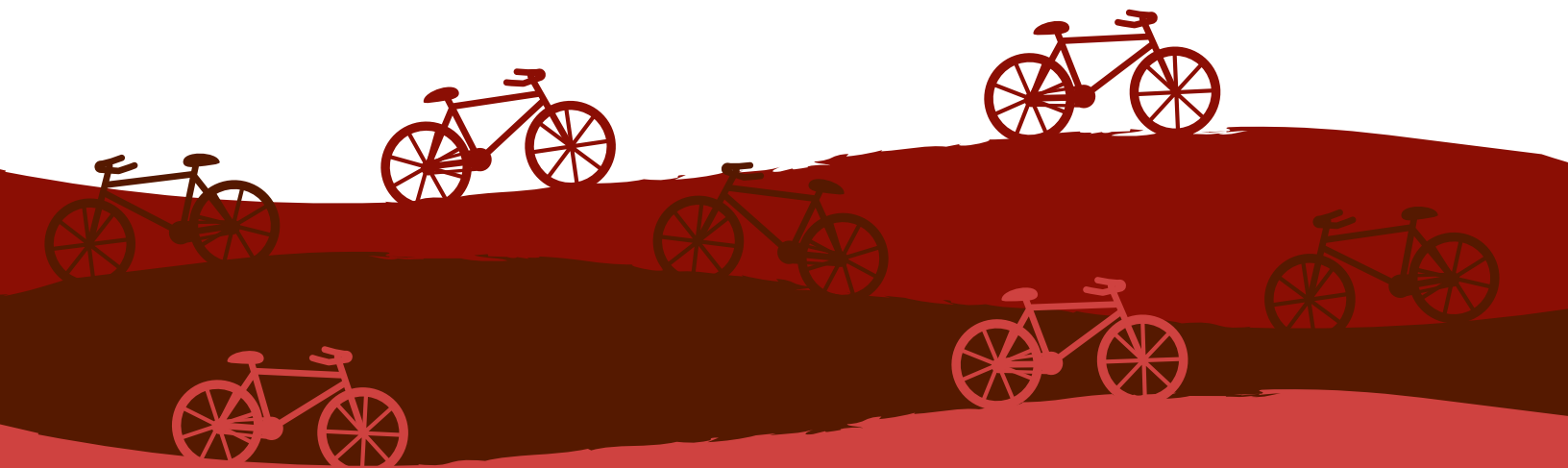




Table of Contents

- Chapter 1 Introduction and Purpose 1
 - 1.1 Cost Estimation Purpose2
 - 1.2 Cost Estimation Sources2
 - 1.3 Item Estimates vs. Project Estimates.....3
 - 1.4 Quick-Builds vs. Full-Builds3
- Chapter 2 Linear Facility Estimates4
 - 2.1 Striped Bike Lane6
 - 2.2 Buffered Bike Lane7
 - 2.3 Protected Bike Lane8
 - 2.4 Raised Protected Bike Lane9
 - 2.5 Shared Use Path10
 - 2.6 Bike Boulevard11
- Chapter 3 Crossing Estimates12
 - 3.1 New Bike/Pedestrian Bridge Over A Highway14
 - 3.2 New Bike/Pedestrian Crossing Over A Waterway15
 - 3.3 New At-Grade Bike/Pedestrian Rail Line Crossing16
 - 3.4 Spot Gap – Trail Connection17
 - 3.5 New Fully Signalized Intersection18
 - 3.6 Trail-to-Street Ramped Connection19
 - 3.7 New Pedestrian Hybrid Beacon and Island20
 - 3.8 Major Intersection Redesign21
 - 3.9 Improvements on Existing Highway Overpass22
 - 3.10 Improvements on Existing Highway Underpass.....24
- Chapter 4 Project Costs26
 - 4.1 Cost Validation28
 - 4.2 Cost Summary31
 - 4.3 Complete List of Projects33
- Figure 1: East Commerce Signature Project Concept28
- Table 1: Project Execution Cost Percentages for all Project Estimates3
- Table 2: Crossing Gap Types13
- Table 3: Estimated Percentages of Project Execution Costs27
- Table 4: East Commerce Estimated Project Execution Costs.....29
- Table 5: Third-Party Validation Costs Breakdown.....30
- Table 6: Complete List of Potential Tier 1 Projects Considered for Future Improvements33
- Table 7: Complete List of Potential Tier 2 Projects Considered for Future Improvements42
- Table 8: Complete List of Potential Tier 3 Projects Considered for Future Improvements57
- Table 9: Complete List of Potential Tier 4 Projects Considered for Future Improvements67



Chapter 1

Introduction and Purpose



1.1 Cost Estimation Purpose

The purpose of this technical memorandum is to provide a comprehensive overview of the methodology and assumptions used in developing the cost estimates for each proposed bicycle facility in the City of San Antonio (CoSA or City) Bike Network Plan. This document serves as a planning-level guideline and was developed based on average examples. Cost estimates for individual projects must be determined separately when project details are available. The estimates in this document will provide guidance in creating a realistic budget for potential projects to ensure that the project is financially feasible and allow CoSA to make informed decisions about types of facilities to prioritize based on budget constraints and overall goals.

There is a current need for improved cost tracking for bicycle facilities. Costs for bicycle facilities are not easy to capture for several reasons: they often occur as part of a larger multi-modal roadway projects, and bicycle-related costs are not tracked separately; in addition, the facility costs may reside in several departments or agencies, commonly planning and engineering, and not always aggregated at the end of the project. The BNP understands that implementing bike facilities will affect the entire surface of a roadway and its surrounding ROW. Thus, the estimates in this document should not be considered the cost of delivering a bike facility, but rather performing essential roadway maintenance and restriping that includes bike infrastructure.

This document serves to detail the various cost factors considered, such as material, and labor, as well as the specific assumptions made regarding the scale and scope of each project. By offering both quick build and full build options, the memorandum highlights the strategic advantages of each approach in different urban planning contexts. By clearly outlining these components, the memorandum aims to facilitate a deeper understanding and enable engineers to create precise and tailored estimates efficiently. The cost of constructing new bicycle and pedestrian facilities plays a major role in the process of prioritization, decision making, and allocation of funds for bicycle and pedestrian projects. An established cost estimation methodology will assist local jurisdictions and state agencies with their project cost computations, and in turn, improve the accuracy of programmed project funds. Also, greater accuracy in a plan's project cost estimates will assist local jurisdictions in making more informed decisions with regards to local funding allocations. The cost of constructing bicycle and pedestrian facilities may vary based on area type (rural or urban), location (uninterrupted roadway facility, mid-block location, or intersection), and the type of facilities being provided (buffered bike lane, shared use path, etc.). By having a clear understanding of the costs associated with each type of facility, the budget can be allocated more effectively. The estimates developed in this plan are a high-level cost, made with a few general assumptions that are listed in each subsequent section.

1.2 Cost Estimation Sources

The CoSA 2022 Unit Price List was used as the main source for the estimates in this document. When CoSA did not have a necessary bid item or lacked pricing information, Texas Department of Transportation (TxDOT) unit pricing information was utilized. When using TxDOT pricing information, the pricing was pulled from the San Antonio District first, and statewide information was used only when necessary.

1.3 Item Estimates vs. Project Estimates

The estimates in this document are planning-level costs for per item and linear implementations of average examples of bike facilities. They include the materials needed to develop the facilities and the full construction of roadway adjacent facilities, such as restriping of roadways, stained concrete and green thermoplastic striping, and moving curbs. In **Chapter 4**, these estimates are applied to the more than 1000 bike plan projects developed in the **Recommended Network Development Report**. **Table 1** includes a number of costs associated with deploying infrastructure are added onto each project to create a more accurate estimate of the total cost of deploying bike infrastructure. These costs include mobilization, design, engagement, contingency, construction engineering and inspections (CE&I), traffic control plans, and escalation. Escalation is estimated annually and will be attributed to each project by its likely implementation year.

Table 1: Project Execution Cost Percentages for all Project Estimates

Project Execution Costs	Percentage of Project Cost Estimates
Mobilization + ROW Preparation	15.0%
Design and Engagement	15.0%
Construction Contingency + Drainage	20.0%
Construction Engineering and Inspection	12.0%
Traffic Control Plan (TCP)	5.0%
Annual Escalation (<i>Calculated mean yearly NHCCI cost increase from Q4 2013 - Q4 2023</i>)	9.6%

1.4 Quick-Builds vs. Full-Builds

The cost estimate for the Linear Facilities (**Chapter 2**) includes costs for both quick build and full build options. A quick build project typically involves temporary or semi-permanent installations that can be implemented rapidly and at a lower cost. They often use materials like paint, plastic bollards, and movable barriers. Quick builds are ideal for testing new concepts, gathering community feedback, and making immediate improvements to safety and accessibility.

In contrast, a full build project is a more permanent solution that requires comprehensive planning, significant financial investment, and longer construction times. These projects usually involve high-quality materials like concrete, steel, and permanent landscaping, resulting in durable and aesthetically pleasing infrastructure. Full builds are suited for long-term urban planning goals and provide robust facilities that can withstand heavy usage over time.

Having both options available is beneficial when planning bicycle facilities. Quick builds allow for immediate enhancements and can serve as pilot projects to assess the effectiveness of proposed changes. They provide a flexible approach to urban development, enabling municipalities to adapt quickly to evolving needs and feedback. Full builds, on the other hand, offer lasting solutions that contribute to the overall vision of a bike-friendly city. By balancing both quick and full builds, cities can gradually improve their infrastructure, ensuring both short-term usability and long-term sustainability.



Chapter 2

Linear Facility Estimates



Based on the designs included in the **Bike Facility Guidelines for Future Amendments** document, linear facility estimates were developed for a cost per one hundred feet and per one mile. The cost estimate for the Linear Facilities includes costs for both quick build and full build options (see **Section 1.3**). Linear facility costs in the following pages are subject to change and significant reduction on those projects that do not require a completely new deployment, but rather an upgrade from another type of bike infrastructure. Examples of such Easy-Deployments are included in the **Recommended Network Development Report**.

Facilities included in this analysis are:

1. **Striped Bike Lanes:** on-street lane striped with white paint and typically located on far right side of the road.
2. **Buffered Bike Lane:** striped bike lane that includes a 1-to-2-ft painted safeguard area to delineate car space from bike space.
3. **Protected Bike Lane:** on-street lane that separates car space from bike space using a physical barrier such as bollards, armadillos, planters, or flex posts.
4. **Raised Protected Bike Lane:** lanes raised above road grade at an intermediate or sidewalk level and vertically separated from car space.
5. **Shared Use Path:** off-street paved or unpaved surface meant for use by pedestrians and micromobility users.
6. **Bike Boulevard:** streets with low traffic volumes and speeds that use signs, pavement markings, and speed and volume management measures to create safe bike facilities.

Specific linear facility estimates are included in **Sections 2.1 to 2.6**.

2.1 Striped Bike Lane

Description:

Striped bike lanes designate exclusive space for people biking using pavement markings and are intended for one-way travel on both sides of two-way streets, typically on the right side of the street, between the outside travel lane and curb, parking lane, or road edge.

Assumptions:

Based on an analysis of San Antonio’s existing roadway network focusing on the Inner Westside and Eastside, this estimate will assume the striped bike lane treatment will be applied to a 40-ft wide roadway surface, with intersections every 400 feet. Not all of San Antonio features this high frequency of intersections or this roadway width but conservative cost estimation is essential to financial planning for new roadway facilities. Additionally, this estimate assumes a two-way roadway facility requiring striping on both sides of the roadway.

Base and Signage Costs:

- 40-ft Seal Coat:
\$8,000 per 100 linear ft (LF)
- Bike Lane Signs:
\$2,000 every 200 ft
- Bike Symbol and Directional Arrow Paint:
\$1,120 every 125 ft
- No Parking Signs:
\$2,000 every 200 ft
- Directional Signs:
\$2,000 per intersection
- White Striped Paint Lane:
\$400 per 100 ft

Quick Build Materials and Items:

- Standard Cross-bike Markings:
\$560 every intersection
- Green Thermoplastic Paint Lane Pad at Intersections:
\$2,700 every intersection

Full Build Materials and Items:

- Green Cross-bike Markings:
\$1,300 every intersection
- Chevron Cross-bike Marking:
\$1,200 every intersection
- Green Stained Concrete Lane:
\$20,000 per 100 LF
- Remove Miscellaneous Concrete:
\$4,650 per 100 LF

100-ft Quick-Build Total: \$12,111

100-ft Full-Build Total: \$37,071

63% Potential Cost Reduction Percentage from Full Build to Quick Build.

2.2 Buffered Bike Lane

Description:

Buffered bike lanes designate exclusive space for people biking using widened pavement markings and are intended for one-way travel on both sides of two-way streets, typically on the right side of the street, between the outside travel lane and curb, parking lane, or road edge.

Assumptions:

Buffered bike lanes are assumed to contain all infrastructure used for striped bike lanes in addition to infrastructure specific to buffered lanes. Additionally, all assumptions from the analysis of striped bike lanes are maintained here.

Base and Signage Costs:

- 40-ft Seal Coat:
\$8,000 per 100 LF
- Bike Lane Signs:
\$2,000 every 200 ft
- Bike Symbol and Directional Arrow Paint:
\$1,120 every 125 ft
- No Parking Signs:
\$2,000 every 200 ft
- Directional Signs:
\$2,000 every intersections
- White Striped Paint Lane:
\$400 per 100 ft

Quick Build Materials and Items:

- Standard Cross-bike Markings:
\$560 every intersection
- Green Thermoplastic Paint Lane Pad at Intersections:
\$2,700 every intersection
- Standard Buffer Striping
\$2,000 per 100 ft

Full Build Materials and Items:

- Green Cross-bike Markings:
\$1,300 every intersection
- Chevron Cross-bike Marking:
\$1,200 every intersection
- Green Stained Concrete Lane:
\$20,000 per 100 LF
- Wide Painted Buffer Striping
\$2,600 per 100 ft
- Remove Miscellaneous Concrete:
\$4,650 per 100 LF

100-ft Quick-Build Total: \$22,111

100-ft Full-Build Total: \$47,671

49% Potential Cost Reduction Percentage from Full Build to Quick Build.

2.3 Protected Bike Lane

Description:

Protected bike lanes designate exclusive space for people biking using physical barriers and are intended for one-way travel on both sides of two-way streets, typically on the right side of the street, between the outside travel lane and curb, parking lane, or road edge.

Assumptions:

Protected bike lanes are assumed to contain all infrastructure used for striped bike lanes and buffered bike lanes in addition to infrastructure specific to protected bike lanes. Additionally, all assumptions from the analysis of striped bike lanes are maintained here.

Base and Signage Costs:

- 40-ft Seal Coat:
\$8,000 per 100 LF
- Bike Lane Signs:
\$2,000 every 200 ft
- Bike Symbol and Directional Arrow Paint:
\$1,120 every 125 ft
- Directional Signs:
\$2,000 every intersection
- White Striped Paint Lane:
\$400 per 100 ft

Quick Build Materials and Items:

- Standard Cross-bike Markings:
\$560 every intersection
- Green Thermoplastic Paint Lane Pad at Intersections:
\$2,700 every intersection
- Standard Buffer Striping
\$2,000 per 100 ft
- Flexible Delineator Posts
\$3,000 per 100 ft
- Parking Stops
\$2,800 per 100 ft
- Parking Space Striping
\$200 per 100 ft

Full Build Materials and Items:

- Green Cross-bike Markings:
\$1,300 every intersection
- Chevron Cross-bike Marking:
\$1,200 every intersection
- Green Stained Concrete Lane:
\$20,000 per 100 LF
- Wide Painted Buffer Striping
\$2,600 per 100 ft
- Parking Space Striping
\$200 per 100 ft
- Raised Median
\$18,000 per 100 ft
- Remove Miscellaneous Concrete:
\$4,650 per 100 LF

100-ft Quick-Build Total: \$36,111

100-ft Full-Build Total: \$73,871

48% Potential Cost Reduction Percentage from Full Build to Quick Build.

2.4 Raised Protected Bike Lane

Description:

Raised Protected lanes elevate bike users above the roadway surface without mixing them with pedestrians. They are intended for one-way travel on both sides of two-way streets, typically on the right side of the street, located on the outside of the curb and above street level.

Assumptions:

It is assumed that the installation of raised bike lanes requires excavation of the roadway, therefore a full build is the only option for raised bike lane construction. However, through further analysis the City may identify ways to expedite the deployment of this infrastructure and reduce costs. Additionally, all assumptions from the analysis of striped bike lanes are maintained here.

Base and Signage Costs:

- 40-ft Seal Coat:
\$8,000 per 100 LF
- Bike Lane Signs:
\$2,000 every 200 ft
- Bike Symbol and Directional Arrow Paint:
\$1,120 every 125 ft
- Directional Signs:
\$2,000 every intersection
- White Striped Paint Lane:
\$400 per 100 ft

Full Build Materials and Items:

- Green Cross-bike Markings:
\$1,300 every intersection
- Chevron Cross-bike Marking:
\$1,200 every intersection
- Green Stained Concrete Lane:
\$20,000 per 100 LF
- Wide Painted Buffer Striping
\$2,600 per 100 ft
- Parking Space Striping
\$200 per 100 ft
- Raised Median
\$18,00 per 100 ft
- Sidewalk Level
\$43,000 per 100 ft
- Remove Miscellaneous Concrete:
\$4,650 per 100 LF

100-ft Full-Build Total: \$88,071

2.5 Shared Use Path

Description:

Shared use paths designate space for both people walking and people biking. They are intended for one-way travel on both sides of two-way streets and are typically on the right side of the street. They are located away from travel lanes, on the outside of the curb (preferably buffered from travel lanes), and above street level.

Assumptions:

The installation of a shared use path assumes no interaction with the roadway, and all construction outside the existing curb to curb width. Since there is no existing facility to place quick-build infrastructure on, a full build is the only option for shared-use path construction.

Base and Signage Costs:

- 40-ft Seal Coat:
\$8,000 per 100 LF
- Directional Signs:
\$2,000 every intersection

Full Build Materials and Items:

- Green Cross-bike Markings:
\$1,300 every intersection
- Chevron Cross-bike Marking:
\$1,200 every intersection
- Two Way Centerline Markings Dashed
\$900 per 100 ft
- Sidewalk Excavation
\$10,000 per 100 ft
- 12 ft Concrete Pad
\$31,000 per 100 ft
- Keep Left | Keep Right Sign
\$500 per 100 ft
- Path Narrows Sign
\$200 per 100 ft
- Bicycles Yield to Pedestrians Sign
\$500 per 100 ft

100-ft Full-Build Total: \$43,600

2.6 Bike Boulevard

Description:

The most complex linear bike facility analyzed for costs is a Bike Boulevard. These facilities do not use striping, buffers or protectors to separate cars from bike users, but rather deploy traffic calming infrastructure on already slower-speed roadways to slow motor vehicles and create a safe space for bike users and motor vehicles to mix on the roadway. These traffic calming devices are spaced approximately every 250 feet and should be mixed amongst each other – thus requiring drivers pay attention more consistently on the roadway.

Assumptions:

Based on an analysis of San Antonio’s existing roadway network focusing on the Inner Westside and Eastside, this estimate will assume the striped bike lane treatment will be applied to a 40-ft wide roadway surface, with intersections every 400 feet. Not all of San Antonio features this high frequency of intersections or this roadway width but conservative cost estimation is essential to financial planning for new roadway facilities. Additionally, this estimate assumes a two-way roadway facility requiring striping on both sides of the roadway.

Base and Signage Costs:

- 40-ft Seal Coat:
\$8,000 per 100 LF
- Bicycles Allowed Use of Full Lane
\$1,000 per 100 ft
- Directional Signs:
\$2,000 every intersection
- Shared Lane Marking
\$592 per 100 ft

Quick Build Materials and Items (featuring parking stops and flex posts):

- Speed Cushion
\$2,485 per 100 ft
- Chicanes
\$511 per 100 ft
- Pinch Points (Chokers)
\$293 per 100 ft
- Median Islands
\$126 per 100 ft
- Corner Extensions
\$1177.50 per 100 ft

Full Build Materials and Items:

- Speed Cushion
\$2,485 per 100 ft
- Chicanes
\$2,500 per 100 ft
- Pinch Points (Chokers)
\$2,500 per 100 ft
- Median Islands
\$5,500 per 100 ft
- Corner Extensions
\$10,000 per 100 ft

100-ft Quick-Build Total: \$15,684.50

100-ft Full-Build Total: \$34,077

54% Potential Cost Reduction Percentage from Full Build to Quick Build.



Chapter 3

Crossing Estimates

In the development of the Recommended Bike Network, specific crossings and intersections with needed improvements were called out as point location and associated with linear projects that relied upon the crossings connectivity or grouped into general connectivity improvements – usually along trails. This section provides cost estimates for the different types of crossings identified.

Not all intersection requiring improvements were identified. Rather, most intersection improvements are included in the linear facility design and cost estimation. In the recommended network report, seven crossing types were identified:

1. **Spot Gaps** between linear bike facilities, such as gaps in roadways at a creek.
2. **Low Stress Crossings Needed** at otherwise uncontrolled intersections.
3. **Vertical Gaps Between Facilities** where trails pass under a roadway but do not connect.
4. **Upgrade Existing Crossing** where a midblock crossing is uncontrolled.
5. **Mid-Block Crossing Need** where a trail facility must cross a roadway mid-block.
6. **Construction Constraints** including particularly complex intersections or crossings.
7. **Intersections Lacks Proper Bicycle Facilities** where a roadway crosses a freeway facility.

For more information on these crossing types, review the *Recommended Network Development & Structure Report*. Depending on circumstances, these seven crossing types were expanded to 10 for the purpose of cost estimation ([Table 2](#)).

Table 2: Crossing Gap Types

Crossing Gap Type	Crossing Cost Estimate Type
Spot Gap	3.1 New Bike/Pedestrian Bridge Over A Highway
	3.2 New Bike/Pedestrian Crossing Over A Waterway
	3.3 New At-Grade Bike/Pedestrian Rail Line Crossing
	3.4 Spot Gap – Trail Connection
Low Stress Crossing Needed	3.5 New Fully Signalized Intersection
Vertical Gap Between Facilities	3.6 Trail-to-Street Ramped Connection
Upgrade Existing Crossing	3.7 New Pedestrian Hybrid Beacon and Island
Mid-Block Crossing Need	
Construction Constraints	3.8 Major Intersection Redesign
Intersection Lacks Proper Bicycle Facilities	3.9 Improvements on Existing Highway Overpass
	3.10 Improvements on Existing Highway Underpass

Crossing Facility Estimates were developed using the CoSA and TxDOT Bid Code information. A percentage was added to each estimate the difficulty of design coordination with respective interfacing entities, such as TxDOT, San Antonio Water System (SAWS), San Antonio River Authority (SARA), and private rail entities. Any extensive drainage changes will not be captured in these estimates.

3.1 New Bike/Pedestrian Bridge Over A Highway

Description:

A new bridge over a highway or freeway is an expensive but necessary feature to implement as many areas of San Antonio do not feature roadway crossings of highways for up to 3 miles. This crossing is designed as a fully separated pedestrian bridge over a highway featuring a shared use path designating space for both people walking and people biking. To create this crossing, several features are necessary, including:

- Concrete shared use paths
- Retaining walls
- Pedestrian rails
- Embankments

Assumptions:

This design assumes the highway is a 300-ft span and the crossing bridge is 12-ft wide. Additional bridge quantity is assumed on approaches including that two-thirds of the sidewalk approach is bridge (to reduce wall costs) – thus 666 linear feet total, out of 1,000 linear feet of sidewalk.

The assumed bridge height is 25 feet, which accounts for the 5-ft structure, and meeting 18.5 feet in required clearance for vehicular travel, rounded up to 25 feet. At 5% max grade, this design requires 500 linear feet on each side, and this assumes 1,000 linear feet by 10-ft sidewalk both sides, totaling 10,000 square feet (SF) of shared use path on approach.

Finally, this design assumes four walls, each a triangle 167 linear feet in length, 8 feet high, on two approaches, each a triangular prism. The triangles are 500 ft x 25 ft, with a width of 10 feet, for a volume of 62,500 cubic feet or 2,315 cubic yards (CY).

Materials and Items:

- | | |
|--|--|
| <ul style="list-style-type: none"> • Concrete Bridge – 11,592 SF at \$200/SF • Sidewalk – 1,111 Square Yards (SY) at \$95/ SY • Retaining Wall – 2,672 SF at \$90/SF | <ul style="list-style-type: none"> • Embankment – 4,630 CY at \$25/CY • Pedestrian Rail – 1,300 LF at \$210/LF • Fencing – 800 LF at \$60/LF |
|--|--|

Per-Crossing Estimated Total: \$3,101,186

3.2 New Bike/Pedestrian Crossing Over A Waterway

Description:

Crossing waterways is an essential way to bridge gaps between disconnected roadway segments. The estimate for a creek crossing assumes 50 ft of a new shared use path designating space for both people walking and people biking with a 50-ft prefabricated pedestrian bridge. It also includes:

- Concrete
- Retaining wall
- Embankment

Assumptions:

The design of this intersection assumes a 50-ft long prefabricated steel truss pedestrian bridge, costing \$1,000 per square yard. Prefabricated bridges may not be appropriate for widths greater than 35 feet, but it is possible.

This design also assumes the gap height is 6 feet (accounts for 5-ft structure and a 10-foot elevation over the waterway). At 8.33% max grade, the bridge will need 60 linear feet on each side. A total of 866 square feet of sidewalk will be needed if sidewalk dimensions are 72 in x 12 in on both sides. The design will also assume one wall is needed – a triangular prism that is 72 feet in length with a width of 10 feet, and no more than 6 feet high, meaning a volume of 3,000 cubic feet.

For reference, TxDOT's Low Bid Average was estimated at \$105/SF for New and Replaced Bridges during FY 2023.

Materials and Items:

- **Sidewalk** – 866 SY at \$71.85 per SY
- **Embankment** – 480 CY at \$25.00/CY
- **Retaining Wall** – 432 SF at \$90.00/SF
- **Pedestrian Bridge** – 66.67 SY at \$1,000.00/ SY

Per-Crossing Estimated Total: \$179,769

3.3 New At-Grade Bike/Pedestrian Rail Line Crossing

Description:

Shared use paths designate space for both people walking and people biking. They are intended for one-way travel on both sides of two-way streets and are typically on the right side of the street. They are located away from travel lanes, on the outside of the curb (preferably buffered from travel lanes), and above street level. The estimate for the rail crossing assumes the need for 50-ft of a new 12-ft wide Shared Use Path. This includes:

- Concrete
- Removal
- Earthwork
- Active Traffic Control Devices
- Signing and Pavement Markings
- Railroad Coordination

Assumptions:

Railroad Coordination, which would include design, review, and cost coordination, is estimated to cost \$50,000 per crossing. The cost estimate also assumes coverage of gate, arm, and signal costs. TxDOT PTN guidance shows a potential range of \$15k-\$500k for railroad considerations; estimated 50k in costs for rail crossing.

Materials and Items:

- | | |
|---|---|
| • Concrete Sidewalk (4") – 66.667 SF at \$95.00/SF | • Reflective Pavement Markers (6") – 50 LF at \$320/LF |
| • Pedestrian Signal – Two signals at \$50,000/signal | • Pavement Sealer (6") – 50 LF at \$240/LF |

Per-Crossing Estimated Total: \$156,893

3.4 Spot Gap – Trail Connection

Description:

Shared use paths designate space for both people walking and people biking. They are intended for one-way travel on both sides of two-way streets and are typically on the right side of the street. They are located away from travel lanes, on the outside of the curb (preferably buffered from travel lanes), and above street level. Construction includes:

- Earthwork
- Signing and Pavement Markings
- Features compliant with the Americans with Disabilities Act (ADA)

Assumptions:

The installation of a shared use path assumes no interaction with the roadway, and all construction outside the existing curb to curb width. Since there is no existing facility to place quick-build infrastructure on, a full build is the only option for shared-use path construction.

The estimate for the Shared Use Path assumes that you are building a 12-ft wide path, off the road. It assumes that there is no existing sidewalk to remove. The general estimated cost to construct a Shared Use Path is \$72,500.

Materials and Items:

- | | |
|---|---|
| <ul style="list-style-type: none"> • Green Cross-bike Markings – \$1,300 every intersection • Chevron Cross-bike Marking – \$1,200 every intersection • Two Way Centerline Markings Dashed – \$900 per 100 ft • Sidewalk Excavation – \$10,000 per 100 ft | <ul style="list-style-type: none"> • 12 ft Concrete Pad – \$31,000 per 100 ft • Keep Left Keep Right Sign – \$500 per 100 ft • Path Narrows Sign – \$200 per 100 ft • Bicycles Yield to Pedestrians Sign – \$500 per 100 ft |
|---|---|

Per-Crossing Estimated Total: \$43,600

3.5 New Fully Signalized Intersection

Description:

Shared use paths designate space for both people walking and people biking. They are intended for one-way travel on both sides of two-way streets and are typically on the right side of the street. They are located away from travel lanes, on the outside of the curb (preferably buffered from travel lanes), and above street level. The estimate for a new traffic signal assumes that it is a completely new traffic signal that is being upgraded from an existing stop-sign. This would also include replacing the existing curb to add 40-ft of a 6-ft wide sidewalk on each corner, including ADA components and:

- Installation
- Electrical
- Signing and Pavement Markings
- Earthwork
- Technical Equipment

Assumptions:

This design assumes a new signal at the intersection (without an existing signal). It assumes 40 feet of sidewalk and curb length on each corner, a 6-ft wide sidewalk, with 4-in thick concrete.

Materials and Items:

Installation:

- **Highway Traffic Signals** – \$50,000
- **Vehicle Signal Section with Back Plate** – 10 count at \$11,484.08 total
- **Traffic Signal Cable 14 AWG** – 2,550 at \$7,710.60 total
- **Traffic Signal Pole (32')** – 4 at \$66,532.00 total

Electrical

- **Traffic Button** – 120 at \$8.95/ea
- **Traffic Signal/Pedestal Pole Assembly** – \$28,614.69 total
- **Conduit** – 925 LF at \$45,793.80 total
- **Electrical Conductors** – \$2,626.80 total
- **Ground Boxes** – 5 at \$6,164.30 total
- **Battery Backup System** -- \$8,977.67
- **Pedestrian Detector Controlled Unit** – \$4,039.37
- **Tray Cable 14 AWG** – 525 at \$4.50/ea

Technical Equipment

- **Pedestrian Detectors** – 4 at \$1,000/ea
- **Audible Pedestrian Signal Units** – 4 at \$1,867.22/ea

Earthwork

- **Remove Misc. Concrete** – 100 SY at \$5.36/ SY
- **Curb Ramp** – 8 at \$4,750/ea
- **Drilled Shafts** – 94.9 LF at \$37,844.41 total
- **Concrete Curb** – 160 LF at \$31.89/LF
- **Concrete Sidewalks** – 75 at \$96.40/ SY

Signing and Pavement Markings

- **New Pavement Markings** – 4,714 LF at \$7,495.45 total
- **Eliminate Extra Pavement Markings** – 8,000 at \$1.50/ea

Per-Crossing Estimated Total: \$364,618

3.6 Trail-to-Street Ramped Connection

Description:

Shared use paths designate space for both people walking and people biking. They are intended for one-way travel on both sides of two-way streets and are typically on the right side of the street. They are located away from travel lanes, on the outside of the curb (preferably buffered from travel lanes), and above street level. The estimate for one new ramp, assuming a 15-ft gap height. It includes 180-ft of 12-ft wide sidewalks on both sides, a 15-ft retaining wall with 3000 cubic yards of embankment.

Assumptions:

The design of this connection assumes a vertical gap on one side. Assuming the gap height is 15 feet, (accounts for 5-ft structure and a 10-foot elevation ramp to the roadway), at 8.33% max grade, the structure will need 180 linear feet on each side. A total of 2,160 square feet of sidewalk will be needed in this design.

This design will assume one wall – a triangle 180 feet in length, and a maximum of 15 linear feet high. There will be one approach, a triangular prism 180 linear feet long, 10 feet wide, and 15 feet tall (a total volume of 3,000 cubic yards).

The installation of a shared use path assumes no interaction with the roadway, and all construction outside the existing curb to curb width. Since there is no existing facility to place quick-build infrastructure on, a full build is the only option for shared-use path construction.

Materials and Items:

- **Concrete Sidewalks (4")** – 240 SY at \$95.00/ SY
- **Retaining Wall (Mechanically Stabilized Earth [MSE])** – 1,350 SF at \$90.00/SF
- **Embankment** – 3,000 CY at \$25.00/CY

Per-Crossing Estimated Total: \$219,300

3.7 New Pedestrian Hybrid Beacon and Island

Description:

Shared use paths designate space for both pedestrians and cyclists. They are intended for one-way travel on both sides of two-way streets, typically on the right side of the street. They are located on the outside of the curb (preferably buffered from travel lanes), and above street level. The cost estimate for a Pedestrian Hybrid Beacon follows the draft CoSA standard for pedestrian crossings. It assumes that there are three existing lanes, one being a 15-ft wide two-way left turn lane. The crossing will include updates to 3 joints of the existing curb line to include ramps, and a 14-ft wide median to create a pedestrian refuge. The estimate also includes:

- 4-post mounted rectangular rapid flashing beacon
- Technical Equipment required
- Existing curb updates
- Signing and Pavement Markings
- Battery powered electrical service

Assumptions:

This design assumes three joints on both sides and a concrete curb around the median, 80 feet long and 14 feet wide.

The installation of a shared use path assumes no interaction with the roadway, and all construction outside the existing curb to curb width. Since there is no existing facility to place quick-build infrastructure on, a full build is the only option for shared-use path construction.

Materials and Items:

Earthwork

- **Remove Misc. Concrete** – 7 SY at \$5.36/ SY
- **Drilled Shafts (24")** – 24 LF at \$316/LF
- **Concrete Curb** – 188 LF at \$31.89/LF
- **Concrete Median** – 93 SY at \$136.08/ SY

Signage and Pavement Markings

- **Pedestrian Crossing Sign (W11-2)(36"x36")** – 4 at \$475.11/ea
- **Diagonal Arrow Sign (W16-7P)(24"x12")** – 4 at \$475.11/ea
- **12-in Wide Black Line** – 180 LF at \$5.53/LF
- **24-in Wide White Line** – 90 LF at \$15.66/LF

Electrical

- **Conduit (2" / PVC Schedule 40)** – 160 LF at \$23.30/LF
- **Conduit (2" / PVC Schedule 40) (Bore)** – 90 LF at \$53.62/LF
- **Electrical Conductors (No. 6) (Bare)** – 250 LF at \$2.78/LF
- **Electrical Conductors (No. 6) (Insulated)** – 580 LF at \$3.04/LF
- **Ground Boxes Type D** – 1 at \$1,174.91
- **Ground Boxes Type D (2/ APRON)** – 4 at \$1,268.83
- **Electrical Service (Type D) (120/240V)** -- \$6,979.50
- **Install Post Mounted Rectangular Rapid Flashing Beacon Assem (Single Sided)** – 4 at \$9,075/ea

Per-Crossing Estimated Total: \$101,063.26

3.8 Major Intersection Redesign

Description:

A major intersection redesign involves adding increased safety features for bikes and pedestrians. Space will be reallocated to shared use paths and lanes will be reconfigured to accommodate new infrastructure.

Assumptions:

The estimate for a major intersection redesign is based on updating the existing roadway from 3 lanes in each direction to the proposed alignment that includes two buffered bike lanes and a raised medians for protected bike turning movements. Work limits were assumed at 75 ft from the center of the intersection in all directions. Existing signal poles will be reused. The main street will have 3 thru lanes in each direction with left turn lanes, and the cross street will have 2 thru lanes in each direction with left turn lanes. This also includes:

For each crossing, 24-in white stripes (assume four 66-ft wide crossings, one 10ft strip every 6 feet), 12-in black stripes, and 12-in white stripes (assume four crossings at 33 feet each) will be used to delineate crosswalks. Median islands will be located on each side of the intersection, 75 square feet each. Assuming six ramps per corner, 24 ADA-compliant ramps total will be installed. Existing curbs will be removed and replaced with the same length of new curb. Curbs will be 35 in x 8 in x 2 in to separate bike and ped facilities (back-to-back curb).

Finally, assume a 12-ft-wide path, with 6 feet dedicated to a bike lane and 6 feet dedicated to a sidewalk.

Materials and Items:

- **24-in White Stripe (Crosswalk)** – 400 LF at \$15.66/LF
- **12-in Black Stripe (Crosswalk)** – 800 LF at \$5.53/LF
- **12-in White Stripe (stop bar)** – 132 LF at \$15.66
- **Median Islands** – 33.33 SY at \$136.08/SY
- **Shared Use Path/Sidewalk and Ramps** – 3,600 SF at \$71.85/SF
- **Curb** – 560 LF at \$32/LF
- **Curb Removal** – 560 LF at \$8/LF
- **Other Pavement Symbols** – 4 at \$488 EA
- **Electronics and Signals** – \$79,409 Total

Per-Crossing Estimated Total: \$407,060.35

3.9 Improvements on Existing Highway Overpass

Description:

The estimate for the highway over redesign assumes the addition of shared use paths to an existing bridge. It is assumed that no bridge widening will be done and hinges on a Load Bearing Rating being done to ensure the improvements are safe. Complete project will contain Shared Use Paths in all directions.

- Removing existing pavement to add a 12-ft shared use path
- Assume 4 ramps and ADA upgrades to adjacent signals
- Signing & Pavement Marking (S&PM)
- Remove curb and add new curb

Assumptions:

The estimate for the highway overpass redesign assumes the addition of shared use paths to an existing bridge. It is assumed that no bridge widening will be done and hinges on a Load Bearing Rating being done to ensure the improvements are safe.

This design assumes a shared use path of 12 feet wide and 300 feet in length, located on both sides of the underpass. Pavement removal of a total of 177.78 cubic yards (12 feet wide, 300 feet long, and 8 inches in depth) will be done on both sides of the underpass. Curb removal and new curb installation of 700 linear feet will also be done, with the addition of pedestrian ramps (four in total).

This design also assumes 1,200 linear feet of striping removal, then the addition of 24-in white stripes, 12-in black stripes, and 12-in white stripes, delineating four crossings with widths of 60 feet each. Two words and two arrows will be located under the bridge going each way (a total of eight).

Finally, lanes will be delineated using 6-in wide white solid and yellow striping. We assume two lanes each way, each of 300 feet. ADA Signal upgrades will also be installed at each crossing, for a total of two.

The general estimated cost to construct a Highway Overpass Redesign is \$181,000.



Materials and Items:

- **Concrete Sidewalks** – 800 SY at \$71.85/ SY
- **Concrete Curb Removal** – 700 LF at \$8.00/LF
- **Concrete Curb** – 700 LF at \$32.00/LF
- **Remove Striping** – 1200 LF at \$5.00/LF
- **Audible Pedestrian Signals** – 2 units at \$1,867.22/ea
- **12-in wide Black Line** – 800 LF at \$5.53/LF
- **24-in wide White Line** – 400 LF at \$15.66/LF
- **4-in wide Yellow Line** – 600 LF at \$1.16/LF
- **4-in wide White Line** – 600 LF at \$0.71/LF
- **Left white arrow** – 8 arrows at \$118.30/ea

Other Quantities

- **Shared Use Path** – 800 SY
- **Pavement Removal** – 177.78 CY
- **Curb Removal** – 700 LF
- **New Curb** – 700 LF
- **Pedestrian Ramps** – 4 total
- **Striping Removal** – 1,200 LF
- **24-in White Stripe** – 400 LF
- **12-in Black Stripe (crosswalk)** – 800 LF
- **12-in White Stripe (stop bar)** – 120 LF
- **6-in White solid** – 600 LF
- **6-in yellow** – 600 LF
- **Words/symbols** – 8 total
- **ADA Signal Upgrades** – 2 upgrades

Per-Crossing Estimated Total: \$107,970.84

3.10 Improvements on Existing Highway Underpass

Description:

Shared use paths designate space for both people walking and people biking. They are intended for one-way travel on both sides of two-way streets and are typically on the right side of the street. They are located away from travel lanes, on the outside of the curb (preferably buffered from travel lanes), and above street level. The improvements for this include 300-ft of two 12-ft Shared Use Paths. Including:

Complete with Shared Use Paths in all directions -assume 300-ft span

- Removing existing pavement to add a 12-ft shared use path
- Assume 4 ramps and ADA upgrades to adjacent signals
- S&PM
- Remove curb and add new curb

The general estimated cost to construct a Highway Under Redesign is \$208,200.

Assumptions:

This design assumes a shared use path of 12 feet wide and 300 feet in length, located on both sides of the underpass. Pavement removal of a total of 177.78 cubic yards (12 feet wide, 300 feet long, and 8 inches in depth) will be done on both sides of the underpass. Curb removal and new curb installation of 700 linear feet will also be done, with the addition of pedestrian ramps (four in total).

This design also assumes 1,200 linear feet of striping removal, then the addition of 24-in white stripes, 12-in black stripes, and 12-in white stripes, delineating four 60-ft wide crossings. Two words and two arrows will be located under the bridge going each way (a total of eight).

Finally, lanes will be delineated using 6-in wide white solid and yellow striping. We assume two lanes each way, each of 300 feet. ADA Signal upgrades will also be installed at each crossing, for a total of two.



Materials and Items:

CoSA Bid Items

- **Concrete Sidewalks** – 840 SY at \$71.85/ SY
- **Street Excavation** – 177.78 CY at \$75.00/CY
- **Concrete Curb Removal** – 700 LF at \$8.00/LF
- **Concrete Curb** – 700 linear ft at \$32.00/linear foot
- **Remove Striping** – 1200 LF at \$5.00/LF

Other Quantities

- **Shared Use Path** – 800 SY
- **Pavement Removal** – 177.78 CY
- **Curb Removal** – 700 LF
- **New Curb** – 700 LF
- **Pedestrian Ramps** – 4 total
- **Striping Removal** – 1,200 LF

- **Audible Pedestrian Signals** – 2 units at \$1,867.22/ea
- **12-in wide Black Line** – 800 LF at \$5.53/LF
- **24-in wide White Line** – 400 LF at \$15.66/LF
- **4-in wide Yellow Line** – 600 LF at \$1.16/LF
- **4-in wide White Line** – 600 LF at \$0.71/LF
- **Left white arrow** – 8 arrows at \$118.30/ea

- **24-in White Stripe** – 400 LF
- **12-in Black Stripe (crosswalk)** – 800 LF
- **12-in White Stripe (stop bar)** – 120 LF
- **6-in White solid** – 600 LF
- **6-in yellow** – 600 LF
- **Words/symbols** – 8 total
- **ADA Signal Upgrades** – 2 upgrades

Per-Crossing Estimated Total: \$124,178.17



Chapter 4 Project Costs

Chapters 2 and 3 summarize item costs for each of the generalized types of linear bike facilities and crossings planned in the bike network. This chapter assigns these costs the projects included in the BNP and estimate the cost of deployment for each. Together, these projects create a 25-year implementation program for the City, not just for bike facilities, but guiding routine roadway maintenance, rehabilitation, and pedestrian improvements.

To do this, the BNP attributes the linear cost estimates to the length of each project by the likely type of bike facility to each project – these facility types are not included in this report because circumstances always change and the purpose of this plan is not to define the likely facility, but project likely costs. To determine the likely facility, project falling on the Primary Network were attributed the linear facility which would feature the greatest separation from motor vehicles. All other projects received an applicable but lower separation facility. The Primary Network will serve, when completed, the city’s highest capacity bike routes – therefore these should be the most separated to ensure safe and comfortable travel by all users. Other networks can feature less separation as they serve fewer destinations or as duplicative networks to the primary network. Finally, the BNP attributed the cost by type and number of crossings to each project and added project execution costs – the essential components of completing designs as physical infrastructure – as a percentage of the total item costs (**Table 3**).

Table 3: Estimated Percentages of Project Execution Costs

Project Execution Costs	Percentage of Project Cost Estimates
Mobilization + ROW Preparation	15.0%
Design and Engagement	15.0%
Construction Contingency + Drainage	20.0%
Construction Engineering and Inspection	12.0%
Traffic Control Plan (TCP)	5.0%
Annual Escalation (<i>Calculated mean yearly NHCCI cost increase from Q4 2013 - Q4 2023</i>)	9.6%

With costs attributed by project, the BNP took one additional step to ensure that the estimated costs were accurate – third-party cost validation. Using the signature project of East Commerce as an example, the BNP tasked a subconsultant who had thus far not participated in the development of design standards or cost estimation to evaluate the cost a 1,000-ft section of East Commerce Street according to designs standards from the *Bike Facilities for Future Guidelines*.

In summary of the total cost of the bike network, costs are projected by implementation tier. In later sections of this chapter, all projects are listed by tier, inclusion in the primary network, and its projected cost.

4.1 Cost Validation

East Commerce is a major connection on the primary network on the East Side of San Antonio, connecting downtown to Salado Creek Greenway. It features an already grade-separated crossing of a rail line and most of the roadway has ample width to feature a striped bike facility without a lane reduction. It also sits on San Antonio’s Vision Zero High Injury Network. East Commerce was selected as a signature project to show how bike facilities can be deployed using new design guidance. As the roadway is an arterial and falls in a high-density area, a protected bike lane is the most appropriate facility for deployment. The existing roadway section consisted of a 75-ft right-of-way (ROW) with 42-ft Roadway (two 10-ft lanes, two 11-ft lanes) two 8-ft parallel parking lanes, and 6-ft and 11-ft Curb & Sidewalks. To accommodate the new facility, the existing section was improved to the following potential new section (75-ft ROW with 33-ft Roadway, two 11-ft lanes, an 11-ft two-way left turn lane (TWLTL), one 8-ft parallel parking lane, two 6-ft Bike Lanes, two 3-ft Bike median/ buffer zones, and 6'-11' Sidewalks on either side) (Figure 1).



Figure 1: East Commerce Signature Project Concept

To validate the cost of deploying this infrastructure, a 1,000-ft sample of this roadway was conceptualized using the bike facilities for future amendments guidance and sent for costing to a third-party BNP subconsultant who was up until then separated from the development of design guidelines and cost estimates.

According to the template cost estimates, this facility should feature a cost of approximately \$1,174,000 including no crossings and all project costs (Table 4).

Table 4: East Commerce Estimated Project Execution Costs

Project Facility Costs	LF		
East Commerce Street Protected Bike Lanes	1000 ft	\$	738,710
Project Execution Costs	%		
Mobilization + ROW Preparation	15.00%	\$	110,807
Design and Engagement	15.00%	\$	110,807
Construction Contingency + Drainage	20.00%	\$	184,678
Construction Engineering and Inspection	12.00%	\$	88,645
Traffic Control Plan (TCP)	5.00%	\$	36,936
Annual Escalation (NHCCI Q413 - Q423)	9.60%	\$	71,181
Total Project Costs		\$	1,341,763

The goal of this validation estimate is to compare this cost to a third-party estimate. In validating, a few key considerations for this site were discussed:

1. In relation to the constructability, the excavation and sub grade preparation required to install the 8-in concrete bike lane pavement will often result in broken curb and sidewalk due to the demolition process. As a conservative approach, the quantities provided capture the placement of 1500 feet of concrete curb with an attached 8-ft width of sidewalk and 150 square yards of sidewalk added at corner bulb-outs for a total of 1500 square yards of sidewalk.
2. In an effort to minimize time and materials, the colored textured concrete was assumed to be placed for the whole widened buffered bike lane in place of requiring conventional asphalt adjacent to the 5-ft colored concrete placement. This will result in 1-ft to 2-ft green surface in the buffered section.
3. Depending on the City of San Antonio Pavement Condition Index (PCI) rating of the roadway, the surface can be treated with a mill and overlay, surface treatment, seal coat, or crack seal upon evaluation. Given the condition of the example project, the mill and overlay with a Type C asphalt surface was included, however, a Type D surface may be required for a local roadway classification. This would double the unit price for an overlay.
4. To maintain the existing drainage patterns, the top of the existing curb was assumed to control the curb height and may result in a variable height curb.
5. This estimate excludes the evaluation and replacement of existing or proposed trees, fences, gates, mailboxes, illumination, signals, pavement, Intelligent Transportation Systems (ITS), and drainage systems. The 500-ft Mill and Overlay approaches to reduce lanes and transition to a multi-modal configuration were not included.
6. Based on the variables noted above, the estimate includes a 20% Contingency.



7. This estimate excludes Trees, Fences, Gates, Mailboxes, Illumination, Signals, ITS, Drainage, and approach transitions.

A detailed cost breakdown is included in [Table 5](#).

Table 5: Third-Party Validation Costs Breakdown

Item No.	Description	Unit	Quantity	Sept 2024 Unit Price	2025 Projected Unit Price (4%)	Cost
100-6002	PREPARING ROW	STA	10	\$ 7,250.00	\$ 7,540.00	\$ 75,400
104-6015	REMOVING CONC (SIDEWALKS)	SY	560	\$ 5.69	\$ 5.92	\$ 3,314
104-6021	REMOVING CONC (CURB)	LF	1000	\$ 20.00	\$ 20.80	\$ 20,800
110-6001	EXCAVATION (ROADWAY)	CY	360	\$ 17.03	\$ 17.71	\$ 6,376
160-6003	FURNISHING AND PLACING TOPSOIL	SY	50	\$ 4.29	\$ 4.46	\$ 223
162-6002	BLOCK SODDING	SY	50	\$ 10.00	\$ 10.40	\$ 520
340-6272	TACK COAT	GAL	950	\$ 4.00	\$ 4.16	\$ 3,952
354-6045	PLANE ASPHALT CONC PAV (2")	SY	4700	\$ 1.85	\$ 1.92	\$ 9,043
502-6001	BARRICADES, SIGNS AND TRAFFIC HANDLING	MO	3	\$ 7,003.00	\$ 7,283.12	\$ 21,849
503-7001	PORTABLE CHANGEABLE MESSAGE SIGNS	DAY	60	\$ 100.00	\$ 104.00	\$ 6,240
505-7002	TMA (MOBILE OPERATION)	DAY	7	\$ 160.00	\$ 166.40	\$ 1,165
506-6038	TEMP SEDMT CONT FENCE	LF	500	\$ 6.00	\$ 6.24	\$ 3,120
506-7044	BIODEG EROSN CONT LOGS (12")	LF	60	\$ 10.00	\$ 10.40	\$ 624
510-6001	ONE-WAY TRAF CONT (FLAGGER)	HR	60	\$ 70.00	\$ 72.80	\$ 4,368
528-6003	COLORED TEXTURED CONC (8")	SY	2429	\$ 137.50	\$ 143.00	\$ 347,347
529-6002	CONC CURB (TY II)	LF	1500	\$ 32.50	\$ 33.80	\$ 50,700
531-6001	CONC SIDEWALKS (4")	SY	1500	\$ 121.00	\$ 125.84	\$ 188,760
536-6002	CONC MEDIAN	SY	480	\$ 175.00	\$ 182.00	\$ 87,360
644-6001	IN SM RD SN SUP&AM TY10BWG(1)SA(P)	EA	10	\$ 1,042.02	\$ 1,083.70	\$ 10,837
644-6076	REMOVE SM RD SN SUP&AM	EA	2	\$ 135.43	\$ 140.85	\$ 282



658-6020	INSTL DEL ASSM (D-SY) SZ 1(FLX) SRF	EA	86	\$ 100.00	\$ 104.00	\$ 8,944
662-6000	WKZN PAV MRK NON-REMOV	LF	4000	\$ 1.00	\$ 1.04	\$ 4,160
666-6035	REFL PAV MRK TY I (W) 8" (SLD)(090MIL)	LF	2200	\$ 1.56	\$ 1.62	\$ 3,569
666-6047	REFL PAV MRK TY I (W) 24" (SLD)(090MIL)	LF	160	\$ 11.04	\$ 11.48	\$ 1,837
666-6053	REFL PAV MRK TY I (W)(ARROW)(090MIL)	EA	10	\$ 221.52	\$ 230.38	\$ 2,304
666-6105	REFL PAV MRK TY I (W)(BIKE ARW)(100MIL)	EA	12	\$ 100.00	\$ 104.00	\$ 1,248
666-6111	REFL PAV MRK TY I(W)(BIKE SYML)(100MIL)	EA	12	\$ 150.00	\$ 156.00	\$ 1,872
666-6302	RE PM W/RET REQ TY I (W) 4" (SLD)(090MIL)	LF	948	\$ 2.02	\$ 2.10	\$ 1,992
666-6308	RE PM W/RET REQ TY I (W) 6" (SLD)(090MIL)	LF	2056	\$ 1.26	\$ 1.31	\$ 2,694
666-6318	RE PM W/RET REQ TY I (Y) 6" (BRK)(100MIL)	LF	146	\$ 1.38	\$ 1.44	\$ 210
666-6320	RE PM W/RET REQ TY I (Y) 6" (SLD)(090MIL)	LF	4000	\$ 1.28	\$ 1.33	\$ 5,325
672-6007	REFL PAV MRKR TY I-C	EA	12	\$ 7.25	\$ 7.54	\$ 90
668-60XX	PREFAB (GREEN) 24" (SLD)(090MIL)	SF	220	\$ 10.00	\$ 10.40	\$ 2,288
3076-6025	D-GR HMA TY-C SAC-B PG70-22	TON	500	\$ 120.00	\$ 124.80	\$ 62,400
SUBTOTAL I						\$ 941,212
CONTINGENCY % 20%						\$ 189,000
MOBILIZATION % 15%						\$ 94,500
PROBABLE COST						\$ 1,271,394

This validation process shows a \$70,000 difference in cost (5% of total cost) between the two estimates, indicating that the templated per 100-ft estimates are slightly higher than validated costs. While this estimates only protected bike lanes, as bid items are repeated throughout all cost estimates, this validates the costs of other facilities as well at this stage in project development.

4.2 Cost Summary

With costs validated, the BNP can now project the likely total cost of all roadway improvements on the bike network. As discussed above, this is not an estimate solely for bike infrastructure, but a 25-year capital improvement program that will implement bike infrastructure as all roadways are resurfaced and redesigned as a part of CoSA’s Roadway Resurfacing, Traffic Calming, and Complete Streets Programs. As CoSA has not yet launched its quick build program the cost reduction benefits of that program is not aggregated by Project Tier total, but rather, in the following section, attributed to each project. In the table below, the potential benefit of more expedient implementation is shown, avoiding escalation costs as projected through estimates from the [National Highway Construction Cost Index \(NHCCI\)](#) as an average of the annual cost escalation from 2013 – 2023.



Timeframe	Total Milage, Description, and Project Opportunities	Cost if Implemented at the Beginning of the time frame	Cost if Implemented at the average of the time frame	Cost if Implemented at the end of the time frame
Tier 1 1 – 5 years	337 Miles of very high priority projects that should be completed in the near term with minimal feasibility concerns that can be quickly deployed, such as <i>Protected Bike Lanes on Camden</i>	\$1.826 Billion	\$2.027 Billion	\$2.229 Billion
Tier 2 3 – 10 years	733 Miles of lower priority projects that also have minimal feasibility concerns or Priority Projects with more constraints, such as a <i>Bike Boulevard on Pine</i>	\$4.511 Billion	\$5.183 Billion	\$6.08 Billion
Tier 3 5 – 15 years	420 Miles of projects with serious feasibility concerns that are not a very high priority, but due to changing circumstances could become feasible or a higher priority, such as the	\$2.368 Billion	\$2.903 Billion	\$3.438 Billion
Tier 4 10 – 25 years	250 Miles of long-term visionary needs that should be implemented as opportunities arise, such as the <i>Eastside Greenway from Salado Creek to Sherman St.</i>	\$1.848 Billion	\$2.393 Billion	\$2.870 Billion

4.3 Complete List of Projects

The complete list of all 1,035 projects for consideration for future bike facility improvements is included in **Tables 6** through **9**. These four tables, separated by tiers 1 through 4, show each project’s projected cost for both a full build and quick build. In viewing these costs, it is important to note that costs were determined from the likely type of bike infrastructure for each project. However, circumstances change, and the design of each facility should be reflective of the community’s desire, the future vision of the entire roadway, and the surrounding built environment. For that reason, the costs shown here, while accurate to the templated project costs may vary depending on the selected type of bike infrastructure and unforeseen circumstances not taken into account in this analysis such as more severe pavement degradation, right-of-way acquisition, utility relocation, more significant drainage costs, and many other factors.

Table 6: Complete List of Potential Tier 1 Projects Considered for Future Improvements

Project Number	Roadway Name	Start	End	Projected Cost	Projected Quick - Build Cost
1	Nogalitos St	I-35	W Cevallos; S Flores St	\$4,350,610	\$1,857,822
7	Grove Ave; Mission Rd	Union Pacific Rail Road	S Presa St	\$3,370,056	\$3,035,118
15	E Arsenal; El Paso St; Turner St; Washington	S Laredo St	S Alamo St	\$3,484,656	\$1,797,047
17	Callaghan Ave	S Presa	Labor St	\$694,132	\$455,728
18	Camargo St; Barrera St	S Presa	Labor St	\$713,605	\$468,513
20	S Laredo St; Santa Rosa	S Alamo St	W Martin St	\$9,069,426	\$8,168,047
22	Nueva; Hemisfair Plaza Way	S Pecos-La Trinidad	Cesar Chavez Blvd	\$7,594,314	\$3,513,762
23	S Alamo St	Pereida	E Commerce St	\$11,272,311	\$10,151,995
24	Flores St	Cesar Chavez Blvd	W Poplar St	\$15,543,365	\$13,998,564
25	S Main Ave	Cesar Chavez Blvd	I-35	\$8,088,915	\$3,561,183
26	Dwyer Ave; Main Plaza; Soledad St; Navarro St; San Pedro Ave	Cesar Chavez Blvd	Navarro St	\$10,123,079	\$4,456,733
30	St Marys St	Lexington Ave	Elmira St	\$6,767,744	\$6,095,121
33	N Presa St; Jefferson; Auditorium Cir; Avenue A	W Market St	I-35	\$5,905,482	\$2,635,207
34	4th St; Lexington Ave	I-35	Avenue E	\$4,548,268	\$1,899,935
41	Camden St	Navarro St	Newell Ave	\$7,002,501	\$3,193,734
43	Martin St; 3rd St	I-35	Houston St	\$15,395,515	\$13,865,408
44	Broadway; Losoya	Commerce St	E Jones Ave	\$8,943,239	\$8,054,401



Project Number	Roadway Name	Start	End	Projected Cost	Projected Quick - Build Cost
48	N Alamo St	Houston St	E Josephine St	\$11,774,792	\$10,604,537
57	N Walters St	Hood St	I-35	\$3,313,043	\$2,983,771
59	Euclid Ave	N Flores St	Park Ave	\$2,381,560	\$1,563,599
61	Howard St	Euclid Ave	Park Ave	\$1,026,563	\$673,983
66	Dewey Pl	San Pedro Ave	W Josephine St	\$4,363,184	\$2,164,032
70	Pasadena; N Brazos St; Michigan Ave; Mcilavaine; Grant Ave; Cincinnati Ave; Blossom Vw	Culebra Rd	Weizman St	\$19,323,651	\$9,019,676
71	Blanco Rd	Fredericksburg Rd	Basse Rd	\$26,833,881	\$24,166,955
73	W Myrtle St	N Comal	San Pedro Ave	\$1,515,103	\$1,167,294
74	N Comal	Fredericksburg Rd	Hickman	\$1,159,832	\$934,043
81	Fulton St	I-10	N Flores St	\$1,867,315	\$1,225,974
87	Olmos Drive	Blanco Rd	Crescent St	\$6,091,508	\$4,171,905
100	Wayside	Dewhurst Rd	Saxon Dr	\$2,072,393	\$1,360,617
101	Crossroads Blvd; Mackey; Freiling Dr; Dewhurst Rd; Cliffwood Dr; Avalon	I-10	Buckeye Ave	\$4,285,624	\$2,986,263
103	Neer Ave	I-10	Basse Rd	\$1,584,333	\$1,040,184
105	Vance Jackson Rd	I-10	Loop 410	\$14,585,033	\$6,531,979
106	Avalon; Milford Dr; Amnon Dr; Saxon	Mackey Dr	Cherry Ridge St	\$3,901,115	\$2,733,816
109	Dresden	West Ave	Blanco Rd	\$5,346,660	\$2,233,444
110	Montview	Arroya Vista Dr	Jackson-Keller Rd	\$1,457,317	\$956,793



Project Number	Roadway Name	Start	End	Projected Cost	Projected Quick - Build Cost
112	Jackson-Keller Rd	Loop 410	McCullough Ave	\$26,798,949	\$24,135,495
121	Rexford; Rampart; York Dr; Langton	Thames Dr	Errol St	\$3,846,455	\$2,697,929
143	Vandiver Rd; Dover Rd	Burr Rd	Urban Crest Dr	\$12,808,043	\$5,691,677
152	Meadowlane Dr; Urban Crest; Oakwell Ct; Northridge Dr; Kenilworth Blvd; Haskin Rd; Greenwich Blvd; Burnside Dr	Austin Hwy	Oakwell Farms Pkwy	\$7,444,043	\$5,079,990
158	Overland Dr; Northgate; Goodhue Ave; Glendora; Fairdale Dr; Elkhorn Dr	Rittiman Rd	Walzem Elementary School	\$4,545,353	\$3,042,993
159	Molokai; Kingston; Judivan; Hartline Dr; Bloomdale; Ashland Dr; Amador	Fairdale Dr	Walzem Rd	\$4,785,372	\$3,200,576
160	Lanark Dr; Harlow Dr	Eisenhower Rd	Elkhorn Dr	\$6,757,826	\$2,822,926
170	St Marys St	I-35	Tuleta Dr	\$17,337,675	\$15,614,544
171	N Main Ave	I-35	W Summit Ave	\$12,666,549	\$5,901,992
173	E Commerce St	I-37	Salado Creek	\$33,259,103	\$29,953,597
174	Cesar Chavez Blvd; Iowa St; Martin Luther King Dr; New Braunfels Ave	I-37	I-10	\$32,082,749	\$28,894,156
179	Hays St	Austin St	N Onslow St	\$9,681,651	\$4,044,287
181	Paso Hondo	N Pine St	N Mel Waiters Way	\$3,823,700	\$2,703,076
182	Montana St	I-37 Access Rd	S Mel Waiters Way	\$9,898,814	\$4,135,002
183	Nevada	S Mesquite St	Meerscheidt St	\$3,247,023	\$2,304,376
186	Porter St; Aransas Ave; Denver Blvd	S Cherry St	Clark Ave	\$7,987,746	\$3,336,697
192	Cherry St	Union Pacific Rail Road	Sherman	\$16,201,413	\$7,132,748
194	Hackberry St	Hays St	I-10	\$20,641,837	\$18,590,317
195	Pine St	I-10	I-35	\$25,508,618	\$22,973,405
196	Palmetto (N/S); Lamar St; Crocket St	Westfall Ave	Sherman	\$5,470,088	\$3,763,915



Project Number	Roadway Name	Start	End	Projected Cost	Projected Quick - Build Cost
197	Gevers St; Dawson St	I-10	Sherman	\$20,167,570	\$18,163,185
198	Walters St	I-10	I-35	\$12,917,400	\$11,633,585
199	Mel Waiters Way; Hedges St; Egar Dr; Clark Ave; Burleson St; Aransas Ave	Westfall Ave	Hudson	\$7,792,883	\$5,520,265
201	Gabriel; Hudson	Sherman	Mel Waiters Way	\$2,425,358	\$1,592,354
207	Theo	Zarzamora St	Mission Rd	\$23,516,457	\$21,179,238
209	Mission Rd	SA River	Roosevelt Ave	\$11,576,563	\$10,426,008
210	Mission Rd	Hansford	I-10	\$8,518,673	\$7,672,032
217	S New Braunfels	Southcross	Global Way	\$24,493,393	\$11,255,787
221	Koehler; Clark; Johnathan; Utopia	Goliad Rd	S New Braunfels	\$5,613,624	\$4,050,803
223	Koehler; Groos; Kathy; Pine; Fairview	Presa St	S New Braunfels	\$12,150,161	\$9,789,936
225	Hackberry St	I-10	Southcross	\$15,554,889	\$14,008,942
226	Presa St	I-10	Southcross	\$12,107,709	\$10,904,366
227	Eads	Roosevelt Ave	Presa St	\$2,286,075	\$1,296,367
231	Division	Nogalitos	Pleasanton	\$17,757,982	\$10,586,374
234	Charlotte; Rife	Nogalitos	US 90	\$3,690,609	\$2,595,610
235	Buffalo; Gladstone; Huron	Theo	Pryon	\$5,315,392	\$3,662,351
238	Culberson	Normoyle Park	Charlotte	\$1,416,931	\$930,278
239	Hoover	Buffalo	Charlotte	\$1,358,921	\$892,191
240	Fitch; Buffalo	Somerset Rd	Stonewall	\$2,842,141	\$1,865,990
242	Weir; Dahlgreen	Growdon	Cupples	\$2,886,469	\$1,953,863
256	Kyle	Fitch	SW Military	\$2,103,281	\$1,380,896
260	Barlite	Kendalia	I-35	\$5,979,794	\$2,879,788
280	Olmos Drive	Fredericksburg Rd	I-10	\$5,088,876	\$2,125,761
1003	Harness; Meadow Leaf; Meadow Way	Marbach	Bronco	\$2,027,088	\$1,330,872
1007	W Military	US 90	Loop 410	\$31,608,815	\$28,467,325
1011	Callaghan Rd	US 90	TX 151	\$6,517,987	\$5,870,187



Project Number	Roadway Name	Start	End	Projected Cost	Projected Quick - Build Cost
1014	Callaghan Rd	TX 151	W Commerce	\$7,728,904	\$6,960,755
1016	Oakhill	Culebra Rd	Ingram Rd	\$10,756,066	\$7,396,907
1017	Viva Max	Oakhill	Callaghan Rd	\$978,139	\$642,191
1018	Callaghan Rd	Culebra Rd	Ingram Rd	\$5,459,292	\$4,916,712
1019	Ingram Rd	Loop 410	Callaghan Rd	\$9,630,072	\$8,672,973
1023	Callaghan Rd	Ingram Rd	Loop 410	\$13,458,555	\$12,120,956
1025	W Commerce	Callaghan Rd	Old Highway 90	\$11,820,331	\$10,645,550
1026	Castroville Rd	Acme	General McMullen	\$15,018,225	\$6,611,844
1027	Old Highway 90	TX 151	W Commerce	\$10,615,416	\$9,560,387
1029	Hemphill	Callaghan Rd	Broadview	\$6,270,735	\$2,619,456
1030	Marshwood; Wheatfield; Majestic	Hemphill	Oak Knoll	\$3,468,532	\$2,449,806
1031	Ingram Rd	Callaghan Rd	Broadview	\$6,433,159	\$5,793,790
1037	Babcock Rd	Loop 410	Fredericksburg Rd	\$24,661,768	\$22,210,721
1039	Broadview; Pettus	Bandera Rd	Culebra Rd	\$4,760,261	\$3,297,883
1042	Quill	Benrus	Sunshine	\$13,918,133	\$12,534,858
1043	Freeman	Broadview	36th St	\$4,541,155	\$2,278,116
1044	Roanoke/Yolanda	Overhill	Aurora	\$2,938,484	\$2,121,893
1047	Aurora; Inez	Benrus	Memorial	\$2,882,218	\$1,892,303
1053	Hillcrest	36th St	Fredericksburg Rd	\$20,611,883	\$18,563,339
1055	Balcones Heights; Spencer	Babcock Rd	Vance Jackson Rd	\$6,865,193	\$2,984,051
1058	Sunshine	Babcock Rd	Hillcrest	\$8,255,426	\$3,789,926
1061	Club; Thomas Jefferson	Saint Cloud	Fredericksburg Rd	\$3,743,921	\$2,630,611
1062	Donaldson	Quill	Fredericksburg Rd	\$12,627,440	\$5,274,823
1065	Cheryl; Ligustrum	Donaldson	Marquette	\$2,698,439	\$1,771,644
1067	Woodlawn	36th St	Wilson	\$16,568,923	\$14,922,195
1068	Lake; Quentin	Woodlawn	Fredericksburg Rd	\$2,300,491	\$1,510,373
1069	Woodlawn	Wilson	I-10	\$14,105,158	\$12,703,295
1070	Camino Santa Maria	Woodlawn	Culebra Rd	\$5,397,953	\$4,861,470
1076	Wilson; 24th	Woodlawn	W Commerce	\$17,265,188	\$15,549,261
1077	Zarzamora St	Fredericksburg Rd	Mistletoe	\$3,343,535	\$1,472,007
1078	Beal; Fulton	Fredericksburg Rd	I-10	\$1,572,871	\$1,091,428



Project Number	Roadway Name	Start	End	Projected Cost	Projected Quick - Build Cost
1080	Vance Jackson Rd	Fredericksburg Rd	I-10	\$6,699,307	\$3,045,784
1082	Buckeye; Clower; Neer	Seward	Fredericksburg Rd	\$6,575,965	\$4,893,868
1083	Fresno	Fredericksburg Rd	I-10	\$9,744,075	\$8,775,646
1086	Hildebrand	Fredericksburg Rd	I-10	\$7,847,512	\$7,067,575
1087	West	Hildebrand	I-10	\$9,597,342	\$8,643,495
1088	Calaveras	Fredericksburg Rd	Buena Vista	\$5,852,228	\$4,069,812
1091	Glenmore; 19th	Josephine Tobin	Buena Vista	\$7,406,007	\$3,202,515
1094	Culebra Rd	36th St	Bandera Rd	\$16,460,250	\$14,824,323
1098	Memorial	Zarzamora Creek	Culebra Rd	\$1,739,036	\$1,245,541
1099	Rivas	34th St	General McMullen	\$1,780,012	\$1,168,656
1100	San Felipe	Culebra Rd	W Commerce	\$6,350,690	\$2,974,472
1102	W Commerce	Old Highway 90	Buena Vista	\$13,332,731	\$12,007,637
1104	27th	Martin	Ruiz	\$650,999	\$427,409
1110	Hamilton	Martin	Driftwood	\$3,172,955	\$2,083,184
1114	El Paso; 24th; 26th	W Commerce	Castroville	\$9,979,801	\$8,987,943
1115	Cupples	Castroville	US 90	\$9,281,608	\$8,359,141
1117	21st; Saltillo; Camilo; Morelai	Ceravalo	Laredo	\$6,385,408	\$2,667,357
1119	Comal	Martin	Guadalupe	\$2,319,878	\$1,626,890
1120	El Paso	24th St	Comal	\$6,576,067	\$4,766,390
1121	Barclay	El Paso	US 90	\$2,826,765	\$1,855,895
1122	Castroville Rd	General McMullen	19th St	\$8,758,141	\$3,855,813
1123	Guadalupe St	19th St	I-10	\$19,699,911	\$17,742,005
1124	Chihuahua	Barclay	Apache Cree	\$3,885,822	\$2,655,001
1130	Brazos	Alazan Creek	Apache Creek	\$7,662,751	\$6,901,176
1131	Saunders	19th St	Brazos	\$4,753,305	\$3,485,965



Project Number	Roadway Name	Start	End	Projected Cost	Projected Quick - Build Cost
1132	W Cesar Chavez; 18th; S Colorado	Guadalupe	19th St	\$4,111,174	\$2,699,166
1134	Colima	Trinity	Brazos	\$607,146	\$398,618
1135	Frio City Road	Zarzamora	Brazos	\$10,244,977	\$9,226,765
1141	19th St	Buena Vista	Guadalupe	\$3,310,237	\$1,696,944
1143	28th; Waverly; Rollins	Ruiz	Navidad	\$11,533,503	\$9,204,962
2094	West Ave	Blanco Rd	Bitters Rd	\$18,751,161	\$16,887,549
2105	San Pedro Ave	W Ramsey	Loop 410	\$11,642,646	\$5,222,112
2109	Rhapsody	West Ave	US 281	\$17,590,440	\$15,842,187
2116	Thousand Oaks	Wetmore Rd	I-35	\$18,722,855	\$16,862,056
2137	Jones Maltsberger/Autry Pond/Bulverde Rd	Thousand Oaks	N Loop 1604	\$34,056,301	\$30,671,563
2139	Bulverde Rd/Wetmore Rd	Redland Rd	Thousand Oaks	\$10,347,341	\$9,318,955
2149	El Sendero	Perrin Beitel	Nacogdoches	\$10,253,095	\$4,282,995
2168	Nacogdoches Rd	Loop 410	Starcrest Dr	\$22,311,107	\$20,093,684
2169	Nacogdoches Rd	Starcrest Dr	Thousand Oaks	\$8,898,635	\$8,014,231
2173	Barrington/Carriage/Comstock/Kings	Hidden Dr	Perrin Beitel	\$5,739,880	\$2,397,703
2184	Crestway Rd	Sherri Ann Rd	Eaglecrest Blvd	\$10,710,328	\$4,715,272
2213	Eaglecrest Bld/Walzem Rd	Crestway Rd	Eisenhauer Rd	\$7,015,314	\$6,318,086
2222	Midcrown Dr	Crestway Rd	Round Table	\$5,881,508	\$2,456,865
2240	Excalibur/Fratt Rd	Ray Bon Dr	Rittiman Rd	\$6,892,039	\$3,336,677
2241	Windway Dr/Ray Bon Dr	Midcrown Dr	Round Table	\$6,301,923	\$2,632,484
2243	Fourwinds Dr	Crestway Rd	Walzem Rd	\$5,475,565	\$2,287,291
3003	N WW White Rd	Gembler Rd	Holmgreen Rd	\$13,520,017	\$5,952,251
3007	Martin Luther King Dr; Lord Dr	I-10 E	Semlinger Rd	\$15,969,341	\$14,382,204
3014	Lord Rd	S WW White Rd	Semlinger Rd	\$4,218,288	\$1,762,093
3015	Rice Rd	S WW White Rd	Semlinger Rd	\$1,893,288	\$1,243,027
3016	S WW White Rd	Holmgreen Rd	Southcross Blvd	\$23,043,532	\$20,753,316



Project Number	Roadway Name	Start	End	Projected Cost	Projected Quick - Build Cost
3031	Kate Schenck Ave	Goliad Rd	Alsbrook Dr	\$2,468,090	\$1,620,410
3050	S Presa St	E Southcross Blvd	Henderson Ct	\$21,698,810	\$19,542,240
3058	Curtis St	E Pyron Ave	Ware Blvd	\$2,272,125	\$1,491,750
3060	E Bonner Ave	Curtis St	Roosevelt Ave	\$861,745	\$565,773
3062	W Pyron Ave; S Flores St; E Pyron Ave	I-35 S	Roosevelt Ave	\$13,443,588	\$6,298,573
3066	Medina Base Rd	SW Loop 410	Old Pearsall Rd	\$13,669,973	\$12,311,362
3073	Bright Valley Dr; Apple Valley Dr	Walnut Valley Dr	Haven Vly	\$5,628,284	\$3,867,778
3087	Quitana Rd	Plumnear	Bynum Ave	\$11,918,109	\$5,183,858
3090	Bynum Ave	Price Ave	New Laredo Hwy	\$4,804,337	\$4,326,851
3100	Palo Alto Rd; Aragon Dr	Reforma Dr	Fairmeadows St	\$2,293,336	\$1,505,676
3110	S Zarzamora St	SW Loop 410	I-35 S	\$19,152,644	\$17,249,129
3113	Gillette Blvd	S Zarzamora St	Garnett Ave	\$12,175,273	\$10,965,215
3118	W formosa Blvd ;E formosa Blvd	Burton Ave	Fourtier Ave	\$8,040,677	\$3,358,808
3141	Padre Dr	SE Military Dr	Roosevelt Ave	\$11,153,944	\$4,910,576
3145	E Southcross Blvd	Pecan Valley Dr	SE Loop 410	\$35,566,711	\$32,031,859
3149	E Southcross Blvd ;W Southcross Blvd	I-35 S	Mission Rd	\$14,699,521	\$6,471,533
3151	E Sayers Ave	Pleasanton Rd	Mission Rd	\$2,104,356	\$1,381,602
3152	E Hart Ave; S Flores St; W Hart Ave	Pleasanton Rd	Mission Rd	\$3,458,430	\$2,615,736
3153	Mission Rd	Hansford	SA River	\$2,471,885	\$2,226,213
3156	S Flores St	Pleasanton Rd	US 90	\$5,842,897	\$5,262,192
3157	Neal Ave; Probandt St	Pleasanton Rd	US 90	\$10,400,706	\$9,367,016
3161	Pecan Valley Dr	S New Braufels Ave	Pollydale Ave	\$21,095,284	\$18,998,697
3162	Pecan Valley Dr	Pollydale Ave	Rigsby Ave	\$18,585,911	\$16,738,722
3164	E Highland Blvd	S Hackberry St	Clark Ave	\$3,340,131	\$2,192,943
3165	Steves Ave	Roosevelt Ave	Clark Ave	\$22,237,648	\$20,027,525
3169	Fair Ave	S Presa St	Clark Ave	\$18,069,143	\$16,273,314
3170	Southside Lions Park	Hiawatha St	Cul-de-sac	\$707,023	\$636,754
3181	Clark Ave	Rigsby Ave	Hotwells Blvd	\$10,712,153	\$4,816,167
3183	Dollarhide Ave	E Southcross Blvd	E Palfrey st	\$5,121,191	\$2,179,715



Project Number	Roadway Name	Start	End	Projected Cost	Projected Quick - Build Cost
3184	Dollarhide Ave	Skyridge Ave	E Southcross Blvd	\$857,992	\$563,309
3190	Lyric Ave; Betty Jean	Hillje	Clark Ave	\$3,612,872	\$2,889,697
3191	S Walters St	I-10	S Gevers St	\$9,566,675	\$7,748,639
3192	S Gevers St	I-10	E Southcross Blvd	\$17,055,219	\$15,360,160
5017	UTSA Blvd	Babcock Rd	Valero Way	\$9,793,954	\$8,820,567
5037	Culebra Rd	FM 1560 N	W Loop 1604 N	\$12,271,888	\$5,728,240
5095	Reed Rd; Richland Hills Dr; Star Creek Dr; W Military Dr	Culebra Rd	N Hunt Ln	\$3,825,451	\$2,570,346
5104	Culebra Rd	W Loop 1604 N	Tezel Rd; Grissom Rd; Culebra Rd	\$19,843,612	\$17,871,425
5105	Culebra Rd	Tezel Rd; Grissom Rd; Culebra Rd	Ingram Rd	\$17,494,232	\$15,755,541
5109	Coral Spgs; Grisom Rd; Heath Circle Dr; Heath Rd	Mainland Dr	Timberhill	\$13,649,791	\$6,453,983
5117	Guilbeau Rd	Bandera Rd	Tezel Rd	\$8,815,105	\$4,229,062
5137	Cinnamon Hill; Hamilton Wolfe	Oakdell Way	Fredericksburg Rd	\$14,184,561	\$6,244,819
5144	Donore Place; Louis Pasteur; Mocking Bird Ln; Pasteur Ct; Tupelo Ln	Horizon Hill Blvd	Babcock Rd	\$9,181,396	\$8,268,889
5146	Babcock Rd; Horn Blvd	Medical Dr	Prue Rd	\$17,615,676	\$15,864,915
5148	Medical Dr	Babcock Rd	W I-10	\$21,571,161	\$9,693,680
5153	Wurzbach Rd	Babcock Rd	W I-10	\$16,687,413	\$7,087,058
5172	W Hausman Rd	N Loop 1604 W	Roadrunner Way	\$10,048,324	\$9,049,656
5177	S Flores	Pleasanton	Roosevelt Ave	\$30,018,004	\$13,215,566



Table 7: Complete List of Potential Tier 2 Projects Considered for Future Improvements

Project Number	Roadway Name	Start	End	Projected Cost	Projected Quick - Build Cost
2	Furnish	S San Marcos	S Flores St	\$2,307,048	\$931,238
3	Klein; Bank St	Cass; Mockert St	Probandt St	\$2,059,001	\$1,385,709
4	S Flores St	I-10	E Arsenal	\$18,109,908	\$15,760,357
5	Lone Star Blvd; Lowell St; Roosevelt Ave; Roosevelt Park Dr; W Drexel Ave	S Flores St	S Hackberry St	\$19,527,923	\$16,994,402
6	Probandt St	I-10	S Alamo St	\$10,771,669	\$4,842,646
8	Steves Ave	Probant St	I-10	\$6,652,739	\$2,945,390
9	Roosevelt Ave; S St Marys	I-10	Eagleland Dr; W Carolina St	\$9,008,951	\$7,840,144
10	S Presa St	I-10	S Alamo St	\$16,521,178	\$14,377,747
11	S Alamo St; Pereida St	I-35	S Presa St	\$6,062,390	\$5,275,865
12	E Guenther St	S Main Ave	Eagleland Dr	\$1,828,316	\$1,159,915
13	E Johnson; W Johnson; Wickes St	S Main Ave	Eagleland Dr	\$1,877,775	\$1,191,293
14	Guadalupe St; W Sheridan	I-35	S Main Ave	\$3,838,321	\$2,036,360
16	Labor St	S Presa St	Cesar Chavez Blvd	\$4,433,550	\$2,212,813
21	Cesar Chavez Blvd	I-35	I-37	\$32,101,194	\$27,936,436
27	Dolorosa; Market St	I-35	S Alamo St	\$4,427,884	\$3,853,417
28	Commerce St	Losoya St	I-37	\$2,194,768	\$1,910,023
31	Houston St	N Frio St	I-37	\$14,877,760	\$12,947,543
36	Brooklyn Ave; Cypress	Fredericksburg Rd	St Marys St	\$12,250,440	\$5,572,954
37	9th St	Broadway St	Austin St	\$490,307	\$311,059
38	10th St	Broadway St	Austin St	\$1,788,185	\$1,100,887
39	Jones Ave	Camden St	I-37	\$5,670,360	\$4,934,696
40	McCullough Ave	I-35	I-37	\$9,446,310	\$8,220,761
42	Cevallos St	S Laredo St	Probandt St	\$4,271,056	\$1,724,008
49	Casa Blanca St; Newell Ave	Karnes St	Austin St	\$6,369,619	\$5,543,235



Project Number	Roadway Name	Start	End	Projected Cost	Projected Quick - Build Cost
50	Austin St	I-35	E Josephine St	\$991,849	\$629,246
51	Mason St	Austin St	New Braunfels Ave	\$2,307,413	\$1,520,601
52	N Pine St	I-35	E Josephine St	\$951,373	\$603,567
53	N New Braunfels Ave	Sherman	E Grayson St	\$4,068,552	\$3,540,704
55	E Grayson St	Broadway St	N New Braunfels St	\$6,109,439	\$2,466,069
56	E Josephine St	Avenue B	N Pine St	\$2,397,207	\$967,630
60	San Pedro Ave	Ashby Pl	I-35	\$9,020,758	\$3,837,588
62	Laurel St; Atlanta Ave; La Harpe St	Euclid Ave	Fredericksburg Rd	\$2,358,243	\$1,496,111
63	McCullough Ave	E Elmira St	Dora St	\$26,159,099	\$22,765,259
65	Park Ave	Howard St	Newell Ave	\$4,553,517	\$3,463,648
67	Fredericksburg Rd	Cincinnati Ave	N Flores St	\$7,275,131	\$6,331,267
68	N Colorado St	I-10	Fredericksburg Rd	\$4,393,823	\$3,823,775
72	N Flores St	Fredericksburg Rd	Ashby Pl	\$3,669,533	\$1,904,418
76	Aganier Ave; W Summit	Hickman	W Olmos Dr	\$5,154,351	\$3,461,616
77	Woodlawn Ave	I-10	McCullough Ave	\$12,655,278	\$5,108,291
78	N Flores St; W Lynwood	W Ashby Pl	W Hollywood Ave	\$6,766,642	\$3,110,437
79	Howard St	W Woodlawn Ave	W Olmos Dr	\$3,142,223	\$1,993,481
80	E Mulberry Ave; Eleanor; Tendick	N Flores	Old Austin Rd	\$8,551,865	\$5,617,058
83	Kings Hwy; Breeden St; Grammercy	N Flores St	McCullough Ave	\$2,606,307	\$1,845,092
85	Hildebrand Ave	I-10	New Braunfels Ave	\$37,036,401	\$32,231,357
88	Shook Ave	Mulberry Ave	Annie St / COSA- Olmos Park boundary	\$1,977,740	\$1,254,712



Project Number	Roadway Name	Start	End	Projected Cost	Projected Quick - Build Cost
89	El Prado; Shook Ave; Hillside Dr	Annie St / COSA-Olmos Park boundary	Contour Dr	\$3,089,780	\$1,960,210
90	Dora St; Fresno	I-10	McCullough Ave	\$18,307,323	\$15,932,160
91	Stanford Dr; Contour Dr; Dick Friedrich	McCullough Ave	Devine Rd	\$12,950,358	\$5,650,614
92	Wildwood; Clower; I-10 Access Rd	I-10	McCullough Ave	\$12,212,069	\$5,731,693
94	Basse Rd	West Ave	Jones Maltzberger Rd	\$24,629,451	\$11,123,045
95	Blanco Rd	Basse Rd	Loop 410	\$23,542,480	\$20,488,116
96	West Ave	I-10	Loop 410	\$25,503,936	\$22,195,096
97	Buckeye; I-10 Access Rd	I-10	Dresden Dr	\$4,792,691	\$3,277,180
98	La Manda Blvd	Vance Jackson Rd	Neer Ave	\$2,164,086	\$1,372,934
99	Panda Dr	Freiling Dr	Cherry Ridge St	\$2,906,438	\$1,843,895
102	Weizman	Buckeye Ave	Beacon Ave	\$3,596,240	\$2,473,123
104	Allena Dr; Arroya Vista Dr; Craigmont Ln; Westmoreland	West Ave	Weizmann St	\$4,044,683	\$2,566,018
107	Dewhurst Rd; Trudell; Loop 410 Access Rd	Crossroads Blvd	Cherry Ridge St	\$6,051,678	\$2,442,754
108	Cherry Ridge Dr	Loop 410	West Ave	\$3,847,808	\$2,697,978
111	Orland Park; Green Meadow Blvd; Arroya Vista Dr; Antler Dr	Blanco Rd	Blanco Rd	\$4,558,340	\$2,891,890
115	Oblate	Blanco Rd	Jones Maltzberger Rd	\$9,561,042	\$8,320,608
116	San Pedro Ave	Jackson-Keller Rd	Loop 410	\$32,930,951	\$21,193,670
117	Jones Maltzberger Rd	Oblate Dr	Loop 410	\$11,915,487	\$10,369,590
122	Rector St; Republic Dr	Blanco Rd	Jones Maltzberger Rd	\$8,930,997	\$3,984,077
126	Tuleta; Stadium Dr; Perishing Ave; Ledge Ln; Kings Ct	Mulberry Ave	Old Austin Rd	\$7,791,500	\$5,199,924
127	Devine Rd	Stadium Dr	Basse Rd	\$5,190,284	\$3,292,807
130	Funston Place	Broadway St	New Braunfels Ave	\$3,144,929	\$2,736,910
131	N New Braunfels Ave	Eleanor Ave	Austin Hwy	\$21,687,401	\$18,873,712
132	N New Braunfels Ave	Austin Hwy	Loop 410	\$23,066,380	\$20,073,784
133	Basse Rd; Nacogdoches Rd	Jones Maltzberger Rd	Loop 410	\$43,925,948	\$38,227,065



Project Number	Roadway Name	Start	End	Projected Cost	Projected Quick - Build Cost
134	Broadway	Hildebrand	Loop 410	\$31,796,497	\$13,526,786
135	Burr Rd	Incarinate Word	Harry Wurzbach Rd	\$21,715,780	\$18,898,410
140	Harry Wurzbach Rd	Burr Rd	Loop 410	\$29,215,164	\$25,424,835
141	Austin Hwy	Broadway St	Walzem Rd	\$65,228,397	\$56,765,769
145	Rittiman Rd	Austin Hwy	I-35	\$33,500,322	\$29,154,044
148	Tuxedo Ave	Jones Maltsberger Rd	Broadway St	\$4,917,966	\$1,985,132
149	Nacogdoches Rd	Alamo Heights Blvd	Basse Rd	\$1,926,789	\$1,222,389
150	Eisenhauer Rd; Claywell Dr	Broadway St	I-35	\$26,272,075	\$12,437,306
151	Ira Lee Rd; Corinne Dr	Rittiman Rd	Laurens Ln	\$6,039,334	\$3,831,459
161	Walzem Rd	Austin Hwy	I-35	\$6,876,457	\$3,648,170
166	Starcrest Dr; Highcliff Dr; Briarglen	Loop 410	Perrin Beitel Rd	\$4,288,808	\$3,092,997
172	E Houston St	I-37	I-10	\$39,166,756	\$34,085,324
176	Nolan St	Elm St	N Pine St	\$7,376,754	\$6,419,706
177	Austin St	Brooklyn Ave	I-35	\$1,769,840	\$1,122,818
188	Westfall Ave	S Cherry St	Clark Ave	\$4,926,719	\$3,317,202
190	Yucca St	Clark Ave	Amanda St	\$4,204,093	\$1,696,978
191	Aransas Ave; Barlow	Martin Luther King Dr	I-10	\$3,959,864	\$2,819,054
193	Mesquite St	Nevada St	Hays St	\$5,948,605	\$4,053,063
200	Spriggsdale; Coca Cola Place	I-10	E Houston St	\$6,545,576	\$3,444,418
203	Gembler Rd; WW White Rd	Fros Bank Center Dr	I-10	\$17,674,591	\$7,684,987
205	Florida	Presa St	Boerne	\$1,322,388	\$533,781
206	Adams	South Alamo	Eagleland	\$1,204,332	\$764,049
208	Malone	Frio City Road	Probandt St	\$27,545,798	\$23,972,050
214	Silversands; Reverie	West	Patricia	\$5,571,970	\$2,249,120
215	Carleton; Huisache; Kings Ct	Mulberry Ave	N St Marys	\$1,798,354	\$1,140,907
219	SE Military	Goliad Rd	WW White	\$19,857,051	\$9,293,425
220	SE Military	Goliad Rd	Mission Rd	\$43,006,306	\$19,023,491
222	Lasses; Quig	Pecan Valley	S New Braunfels	\$2,445,102	\$1,880,366
224	Avondale; Gevers; Monticello; Betty Jean	Southcross	Goliad Rd	\$2,509,180	\$1,591,868
228	Roosevelt Ave	I-10	SA River	\$6,775,585	\$5,896,532
229	Roosevelt Ave	SA River	Pyron	\$10,811,180	\$5,900,839



Project Number	Roadway Name	Start	End	Projected Cost	Projected Quick - Build Cost
232	Stonewall	Somerset Rd	Pleasanton	\$19,265,380	\$15,673,227
233	Collingsworth; Britton; Commercial	Stonewall	Theo	\$2,722,028	\$1,726,902
236	Nogalitos St	I-35	Zarzamora St	\$20,252,356	\$8,977,109
237	Zarzamora St	US 90	Nogalitos	\$10,905,594	\$9,490,720
241	Kirk Pl	Cupples	Zarzamora St	\$6,161,882	\$2,487,238
243	Thompson; 21st	36th St	Kirk Pl	\$6,049,509	\$4,221,125
248	36th St	General Hundell	US 90	\$22,543,981	\$19,619,161
250	Cupples	US 90	General Hundell	\$13,278,760	\$11,555,995
251	Quintana	General Hundell	Bynum	\$15,797,186	\$13,747,684
252	Frio City Road	Malone	Kirk Pl	\$10,134,049	\$8,819,274
254	New Laredo Hwy	Bynum	Zarzamora St	\$41,799,948	\$18,547,303
255	Packard	Chalmers	Fitch	\$2,145,722	\$1,552,889
257	Zarzamora St	Nogalitos	I-35	\$5,909,466	\$3,962,977
258	Southcross	Quintana	I-35	\$23,289,571	\$10,672,664
262	Wagner; Otho	Pyron	Bynum	\$4,482,492	\$3,100,632
263	Mayfield; Farefield	Wabash	Bynum	\$5,366,435	\$3,596,165
264	Wabash; Kendalia	Pryron	Somerset	\$2,609,592	\$1,847,177
265	General McMullen	Weir	General Hundell	\$17,940,495	\$7,632,200
1001	Airlift; Gunsmoke; Stagecoach; Hackamore; Westrock; WestOak; Colt	Loop 410	US 90; Westfield Blvd	\$11,654,031	\$9,045,889
1002	Bronco; Hackamore; Westfield Blvd	Loop 410	Old Highway 90	\$19,395,724	\$11,476,535
1005	Marbach	Loop 410	Pinn	\$24,944,742	\$21,708,450
1008	Pinn	US 90	W Commerce	\$12,575,238	\$10,943,747
1010	Old Highway 90	US 90	TX 151	\$12,248,149	\$10,659,094
1013	W Commerce	W Military	Callaghan Rd	\$11,393,093	\$9,914,971
1015	Culebra Rd	Loop 410	Callaghan Rd	\$16,993,389	\$7,352,368
1020	Ingram Access Rd; Warpath; Thunder	Loop 410	Callaghan Rd; Ingram Rd	\$4,778,925	\$3,223,439
1024	Acme	US 90	W Commerce	\$15,962,220	\$6,790,608
1028	Culebra Rd	Callaghan Rd	36th St	\$10,654,122	\$9,271,873
1032	Chesterhill	Hemphill	Ingram Rd	\$1,564,994	\$992,859



Project Number	Roadway Name	Start	End	Projected Cost	Projected Quick - Build Cost
1033	Oak Knoll	Ingram Rd	Benrus	\$3,547,224	\$2,365,663
1034	Clearview	Callaghan Rd	Hillcrest	\$3,677,658	\$2,547,080
1036	Crestview; Broadview; Horizon; One Oak; Crestline; Glenview	Broadview	Balcones Heights Rd	\$4,392,709	\$3,000,720
1038	Bandera Rd	Callaghan Rd	Woodlawn	\$21,993,805	\$9,356,550
1040	Benrus	Bandera Rd	Aurora	\$23,522,668	\$20,470,875
1041	Ridge Rd	Ingram Rd	Benrus	\$1,329,413	\$843,403
1045	Woodlawn; Overhill; Maiden	Broadview	36th St	\$4,715,376	\$1,903,357
1046	NW 36th St	Zarzamora Creek	Culebra Rd	\$2,312,403	\$1,658,635
1048	Fortuna; Calle Sur	Zarzamora Creek	General McMullen	\$4,942,051	\$3,135,323
1049	39th St; 38th St	Aurora	Castroville	\$6,866,520	\$4,608,920
1050	Eldridge; Wallace; Las Palmas	Old Highway 90	26th St	\$7,048,727	\$4,728,697
1051	36th St	US 90	W Commerce	\$18,609,003	\$16,194,700
1052	36th St; Esmeralda	W Commerce	Hillcrest	\$23,785,914	\$20,699,968
1056	Gentlemen; Loma Linda	Babcock Rd	Hillcrest	\$4,659,939	\$3,147,952
1057	Overbrook	Balcones Heights	Sunshine	\$1,936,962	\$1,228,843
1059	North; Shadwell; Zackry	Sunshine	Fredericksburg Rd	\$7,361,186	\$5,053,276
1063	Dickinson; Manor	Thomas Jefferson	Donaldson	\$410,377	\$260,350
1066	Saint Cloud	Babcock Rd	Bandera Rd	\$13,625,082	\$5,796,349
1071	Bandera Rd	Woodlawn	Culebra Rd	\$10,137,700	\$4,716,226
1072	General McMullen	Bandera Rd	W Commerce	\$24,173,974	\$10,501,398
1073	Cincinnati	Camino Santa Maria	Josephine Tobin	\$16,824,514	\$14,641,728
1074	Josephine Tobin; French Pl; Cincinnati	Woodlawn	Elmendorf	\$8,004,146	\$6,965,701
1075	Cincinnati	Elmendorf	I-10	\$7,004,174	\$6,095,463
1079	Fredericksburg Rd	Loop 410	Fresno	\$22,223,949	\$19,340,649
1081	Angeles; Edison; Gardina; Rodena; Seward	Vance Jackson Rd	Ridgewood	\$2,841,515	\$1,802,707



Project Number	Roadway Name	Start	End	Projected Cost	Projected Quick - Build Cost
1084	Pasadena	Fredericksburg Rd	Neer	\$1,436,797	\$911,529
1089	Zarzamora St	Mistletoe	Buena Vista	\$17,217,832	\$7,542,133
1090	Elmendorf	Cincinnati	Poplar	\$1,577,698	\$1,000,919
1092	Hamilton	Alazan Creek	Culebra Rd	\$1,124,542	\$868,972
1093	Navidad	Alazan Creek	Buena Vista	\$5,682,981	\$4,099,257
1095	Culebra Rd	Bandera Rd	I-10	\$22,520,710	\$19,598,909
1096	34th St	36th St	Culebra Rd	\$22,916,290	\$10,744,511
1097	Arboleda; San Joaquin	US 90	Culebra Rd	\$7,714,765	\$5,629,448
1101	Ruiz	San Joaquin	Frio St	\$9,506,530	\$6,261,592
1103	26th St	W Commerce	Culebra Rd	\$4,716,921	\$3,398,012
1105	Perez; Dartmouth	Rosedale Park	Alazan Creek	\$5,204,335	\$3,482,217
1107	Martin	General McMullen	Frio St	\$28,217,057	\$12,523,454
1109	Poplar	28th St	Frio St	\$15,794,754	\$7,026,755
1111	General McMullen	W Commerce	Ceravalo	\$18,960,145	\$8,065,977
1112	Colorado	Alazan Creek	I-10	\$11,689,686	\$10,173,085
1113	Commerce; Buena Vista	San Marcos	22nd St	\$22,224,043	\$19,340,731
1116	Ceravalo	34th St	Frio City Rd	\$18,068,338	\$7,422,373
1118	Laredo	21st St	I-10	\$12,088,761	\$5,258,705
1125	Driftwood; Menefee; Barclay	Ceravalo	Kirk Pl	\$2,864,182	\$1,817,087
1126	Brady	Barclay	Frio City Rd	\$3,913,747	\$2,674,555
1128	Zarzamora St	Buena Vista	US 90	\$18,322,125	\$8,373,321
1129	Navidad	Buena Vista	Brady	\$5,308,860	\$3,605,047
1133	Brazos	Apache Creek	S Park	\$8,028,522	\$3,619,793
1136	Oriental; Marian; Floyd; Cumberland	US 90	I-10	\$5,275,987	\$3,730,390
1137	Academic; Drake	Frio City Road	S Park	\$1,122,461	\$903,714
1139	Buena Vista	Colorado	I-10	\$6,099,150	\$5,307,856
1140	Frio St	Fredericksburg Rd	I-35	\$33,665,680	\$29,297,948
2003	Blanco Rd	W Borgfeld Dr	N Loop 1604	\$94,820,646	\$40,461,446
2010	Bulverde Rd	E Evans Rd	N Loop 1604	\$65,162,594	\$56,708,502
2011	TPC Pkwy	US 281	E Evans Rd	\$77,218,705	\$32,973,272



Project Number	Roadway Name	Start	End	Projected Cost	Projected Quick - Build Cost
2016	Hardy Oak Blvd	H-E-B at Hardy Oak/Wilderness Oak	South of Stone Oak Pkwy	\$42,730,602	\$37,186,801
2018	Evans Rd	Stone Oak Pkwy	US 281	\$31,072,912	\$13,218,961
2022	La Cantera/Vance Jackson/Camp Bullis	I-10 W	N Loop 1604	\$26,739,640	\$23,270,482
2027	Huebner Rd	N Loop 1604	Stone Oak Pkwy	\$24,110,753	\$20,982,662
2028	Stone Oak Pkwy	US 281	Evans Rd	\$33,641,448	\$14,311,661
2029	Stone Oak Pkwy	Evans Rd	Huebner Rd	\$30,334,631	\$12,904,883
2030	Stone Oak Pkwy	Huebner Rd	N Loop 1604	\$21,595,964	\$9,187,301
2048	Vance Jackson Rd	N Loop 1604	De Zavala Rd	\$19,974,456	\$17,383,002
2049	De Zavala Rd	I-10 W	NW Military Hwy	\$29,115,907	\$25,338,456
2051	Indian Woods	De Zavala Rd	Lockhill-Selma	\$1,651,305	\$666,548
2052	Vance Jackson Rd	De Zavala Rd	Huebner Rd	\$25,788,788	\$22,442,991
2054	Huebner Rd	I-10 W	NW Military Hwy	\$22,780,152	\$19,824,691
2055	Huebner Oaks	I-10 W	I-10 W	\$9,192,870	\$3,710,693
2057	Vance Jackson Rd	Huebner Rd	Wurzbach Rd	\$7,100,804	\$6,179,557
2058	Lands Run/Pinebluff/Stonehaven/Tioga	Big Meadows Ln	Callaghan Rd	\$5,821,664	\$3,693,365
2059	Colony Dr	I-10 W	Colonies North Elementary School	\$3,054,066	\$1,232,771
2061	Pinebrook Dr	I-10 W	N Loop 1604	\$1,548,781	\$982,574
2062	Callaghan Rd	I-10 W	Vance Jackson Rd	\$7,860,967	\$6,841,098
2063	Vance Jackson Rd	Wurzbach Rd	Callaghan Rd	\$6,943,506	\$6,042,667
2069	George Rd	Lockhill-Selma	Cul-de-sac	\$2,767,218	\$1,870,813
2070	Vantage Hill Dr	NW Military Hwy	Neighborhood	\$1,991,793	\$1,263,628
2071	NW Military Hwy	Huebner Rd	Wurzbach Pkwy	\$10,524,029	\$4,600,189
2074	Lockhill-Selma	NW Military Hwy	Blanco Rd	\$20,844,742	\$18,140,378
2076	NW Military Hwy	Wurzbach Pkwy	Lockhill-Selma	\$14,407,121	\$6,129,041
2078	Lemonwood Dr	Loop 410	NW Military Hwy	\$1,271,862	\$806,891
2083	Larkspur	Larkspur Elementary School	Morey Peak	\$4,562,297	\$1,841,567



Project Number	Roadway Name	Start	End	Projected Cost	Projected Quick - Build Cost
2084	West Ave	Lockhill-Selma	Blanco Rd	\$6,294,648	\$5,477,990
2088	Blanco Rd	Wurzbach Pkwy	West Ave	\$8,541,928	\$3,633,886
2091	Huebner Rd	NW Military Hwy	N Loop 1604	\$30,603,229	\$26,632,814
2093	W Bitters Rd	Blanco Rd	US 281	\$15,996,398	\$13,921,051
2097	Hidden View	Hidden Forest Elementary School	Tower Dr	\$3,259,891	\$2,068,131
2100	Donella/Meadowbrook Dr	N Loop 1604	US 281	\$5,373,416	\$3,530,982
2102	Ramsey	Blanco Rd	Jones Maltsberger Rd	\$18,914,733	\$16,460,765
2103	Blanco Rd	West Ave	Loop 410	\$9,009,193	\$7,840,355
2106	Isom Rd	San Pedro Ave	Sandau	\$13,418,222	\$11,677,364
2107	Marquis Ln	McCullough Ave	Jones Maltsberger Rd	\$1,095,602	\$695,069
2110	Nakoma/Warfield; North Loop	Rhapsody	Salado Creek Greenway	\$3,052,200	\$1,993,107
2112	Copper Hill/Parhaven/Parkstone	US 281	Ledge Vw	\$4,568,262	\$2,898,185
2113	Ledge Hollow/Ledge Vw/Rough Oak/Turkey Pt	Thousand Oaks	Thousand Oaks Elementary School	\$6,216,350	\$4,135,366
2114	Thousand Oaks	US 281	Jones Maltsberger Rd	\$12,330,402	\$10,730,675
2115	Thousand Oaks	Jones Maltsberger Rd	Wetmore Rd	\$8,634,440	\$7,514,222
2118	Shadow Cliff/Crow Valley/Great Oaks	Heimer Rd	Jones Maltsberger Rd	\$4,235,730	\$2,878,826
2119	Henderson Pass	Thousand Oaks	Brook Holw	\$6,950,643	\$2,805,621
2120	Brook Holw	US 281	Jones Maltsberger Rd	\$5,199,956	\$3,490,548
2121	Ridgeboro/Timber Oak	Oak Shadows	Heimer Rd	\$1,526,201	\$968,248
2122	Oak Shadows	US 281	Heimer Rd	\$1,322,648	\$839,111
2124	Cross Canyon Dr	Neighborhood	Heimer Rd	\$404,416	\$256,568
2125	Perennial/Budding Blvd	Heimer Rd	Starcrest Dr	\$5,210,949	\$3,305,917
2126	Bitters Rd/Starcrest Dr	US 281	Wurzbach Pkwy	\$35,373,843	\$30,784,497
2127	Heimer Rd/Maltsberger Ln	US 281	Brook Holw	\$11,154,378	\$4,547,374
2129	Jones Maltsberger Rd/Sandau	US 281	US 281	\$6,654,467	\$2,686,069
2130	Wetmore Rd	Loop 410	Salado Creek Greenway Vertical Crossing	\$20,873,715	\$8,995,241
2131	Wetmore Rd	Salado Creek Greenway Vertical Crossing	Thousand Oaks	\$15,821,658	\$6,730,810
2132	Broadway/MacArthur View	Loop 410	Wetmore Rd	\$15,415,083	\$6,664,865
2133	Starcrest Dr	Nacogdoches Rd	Neighborhood	\$1,318,184	\$858,983
2134	Money Tree/Susancrest Dr	Heimer Rd	Jones Maltsberger Rd	\$2,932,808	\$1,860,624



Project Costs

Project Number	Roadway Name	Start	End	Projected Cost	Projected Quick - Build Cost
2135	Unnamed Park Road- McAllister Park	Jones Maltsberger Rd	McAllister Park	\$2,411,185	\$1,529,698
2136	Jones Maltsberger Rd	Starcrest Dr	Thousand Oaks	\$21,326,271	\$9,433,971
2140	Green Springs/Tavern Oaks	Bulverde Rd	Thousand Oaks	\$4,141,215	\$2,627,259
2143	Scarsdale Rd	Thousand Oaks	Bell Dr	\$3,014,264	\$1,912,302
2145	Classen Rd	Autry Pond	Knollcreek	\$10,767,494	\$9,370,536
2146	Classen Rd/Higgins Dr	Knollcreek	Nacogdoches	\$9,725,395	\$8,463,638
2148	Nacogdoches Rd	Thousand Oaks	Higgins Rd	\$10,977,427	\$4,669,989
2152	Yeomans/Wordsworth/Bret Harte	Nacogdoches Rd	Neighborhood	\$861,490	\$546,544
2153	O'Connor Rd	Nacogdoches Rd	O'Connor Rd	\$13,947,327	\$6,056,520
2155	Nacogdoches Rd	Judson Rd	N Loop 1604	\$8,228,323	\$7,160,793
2162	N Weidner/Crosswinds Wy	I-35	O'Connor Rd	\$7,799,368	\$6,787,490
2164	Independence Ave	Crosswinds Wy	Judson Rd	\$6,894,341	\$2,782,894
2171	Perrin Beitel	Austin Hwy	Thousand Oaks	\$25,889,150	\$11,778,571
2172	Starcrest Dr	Loop 410	Independent Schools Assn	\$7,906,145	\$3,191,308
2176	Rowe Dr	Thousand Oaks	Neighborhood	\$455,280	\$288,838
2187	Gibbs-Sprawl Rd/Rittiman Rd	Branching Ct	Castle Cross	\$19,526,500	\$16,993,163
2188	Rittiman Rd	Loop 410	FM 78	\$28,751,451	\$25,021,283
2194	Binz-Engelman Rd	Timothy J. Wilson Trail	Woodlake Pkwy	\$8,644,991	\$7,523,404
2201	N Foster Rd	FM 78	FM 1346	\$70,971,016	\$30,595,783
2202	Randolph Blvd	Crestway Rd	Judson Rd	\$14,792,037	\$12,872,941
2203	Earlyway/Starlight Terrace	I-35	Sherri Ann Rd	\$1,504,042	\$1,019,445
2211	Eisenhauer Rd	Loop 410	Walzem Rd	\$19,438,714	\$8,269,569
2212	Eaglecrest Blvd/Weidner Rd	I-35	Crestway Rd	\$19,509,809	\$16,978,637
2216	FM 1346	Loop 410	Schuwirth Rd	\$28,944,900	\$25,189,635
2218	Walzem Rd	Loop 410	Eaglecrest Blvd	\$13,654,109	\$5,808,697
2219	Montgomery Dr	Walzem Rd	Gibbs-Sprawl Rd	\$17,930,040	\$7,627,753
2223	Midcrown Dr	Round Table	Woodlake Pkwy	\$6,175,929	\$3,918,117
2225	Summer Fest Dr	FM 78	Woodlake Pkwy	\$10,544,488	\$4,256,273
2226	Lakeview Dr	FM 78	Woodlake Pkwy	\$9,486,890	\$4,252,588
2229	FM 78	I-35	Gibbs-Sprawl Rd	\$15,239,357	\$6,483,089
2238	King Arthur/Round Table	Eisenhauer Rd	Midcrown Dr	\$5,270,242	\$3,749,048
2242	Ray Bon Dr	Round Table	Fratt Rd	\$9,429,788	\$3,806,325



Project Number	Roadway Name	Start	End	Projected Cost	Projected Quick - Build Cost
2247	Parkcrest Dr	Golfcrest Dr	Walzem Rd	\$2,033,633	\$1,504,081
2249	Rigsby Ave/US 87 E	Loop 410	Forest Meadows	\$33,065,295	\$14,427,958
2251	Heather Meadow/Lake Meadow/Vista Lake	US 87	New Sulphur Springs	\$5,888,384	\$3,735,693
2254	Lakefront	US 87	Gas Station	\$643,503	\$473,505
2256	Goliad Rd/Old Corpus Christi Rd	City Base Landing	US 181 S	\$35,345,913	\$30,760,190
2270	Pleasanton Rd	Loop 410	Mauermann Rd	\$12,830,312	\$11,165,728
2271	Pleasanton Rd	Mauermann Rd	Old Medina River Bridge	\$16,613,060	\$14,457,708
2273	Jaguar Pkwy	Zarzamora St	dead end	\$19,933,590	\$17,347,438
2275	Applewhite Rd/S Zarzamora	Loop 410	Mauermann Rd	\$29,870,778	\$25,995,391
2276	Applewhite Rd	Mauermann Rd	Old Applewhite Rd	\$96,092,323	\$83,625,458
2278	Palo Alto Rd	SH 16 S	Medina River Natural Area	\$1,500,285	\$1,204,487
2281	Lone Star Pass	SH 16 S	Applewhite Rd	\$25,365,263	\$10,790,827
2283	Camino Coahuilteca	San Antonio River	Villamain	\$587,398	\$372,655
2293	UTSA Blvd	I-10	Vance Jackson Rd	\$11,485,362	\$9,995,270
2297	Vista Real	Blanco Rd	Vista Bonita	\$716,658	\$454,660
2299	Parksite Woods	neighborhood	De Zavala Rd	\$376,836	\$239,071
3001	Belgium Ln	Dead End	Leon Thomas Way	\$489,237	\$197,480
3004	E Houston St	I-10 E	NE Loop 410	\$23,028,158	\$20,040,521
3006	Kenmar Dr	Upland Rd	S WW White Rd	\$3,158,311	\$2,409,203
3009	Pecan Valley Dr	I-10 E	Rigsby Ave	\$13,272,470	\$11,550,521
3010	F St	Pecan Valley Dr	Brooksdale Dr	\$2,711,498	\$1,911,827
3011	Brooksdale Dr; Rice Rd	Brooksdale D	Rice Rd	\$871,146	\$728,987
3012	Cresthill Rd;Shrader Rd;Cresthill Rd	Cresthill Rd	Holmgreen Rd	\$1,915,585	\$1,237,985
3013	Holmgreen Rd	Cresthill Rd	Dead end	\$4,007,455	\$2,657,641
3017	Roland Rd	S WW White Rd	Sinclair Rd	\$6,180,926	\$2,918,139
3019	Sinclair Rd	SE Loop 410	S WW White Rd	\$4,865,248	\$1,963,853
3021	Rigsby Ave	S WW White Rd	Semlinger Rd	\$10,005,762	\$4,783,180
3024	Semlinger Rd	Lord Rd	Rigsby Ave	\$6,723,099	\$3,092,861
3025	Club VW	Greco Dr	E Southcross Blvd	\$823,755	\$522,605
3026	Roland Rd	I-10 E	Sinclair Rd	\$26,383,948	\$22,960,936
3027	J St	Amanda St	Cul-de-sac	\$1,947,061	\$1,449,159
3028	S WW White Rd	E Southcross Blvd	S WW White Rd	\$9,789,447	\$4,164,602
3029	Alsbrook Dr	Kate Schenck Ave	SE Military Rd	\$1,041,569	\$660,790
3032	E Palfrey St;Corfu Dr	Goliad Rd	Valle Vista Dr	\$3,787,565	\$2,402,897
3033	Killarney Dr	Galway St	Fairlawn Dr	\$506,860	\$321,561
3034	Galway st	Pickwell Dr	Killarney Dr	\$335,405	\$212,787
3035	Pickwell Dr	Killarney Dr	Galway St	\$410,446	\$283,098



Project Number	Roadway Name	Start	End	Projected Cost	Projected Quick - Build Cost
3036	Killarney Dr	Bob Billa St	Pickwell Dr	\$897,008	\$569,077
3037	Dollarhide Ave	Pollydale Dr	Dollarhide Ave	\$1,414,353	\$897,290
3038	Pollydale Dr	Dollarhide Ave	Dollarhide Ave	\$2,557,885	\$1,836,676
3040	Global Way	Hawks Rd	Goliad Rd	\$5,138,074	\$2,194,814
3044	Sidney Brooks Dr	S Presa St	City Base landing	\$11,349,040	\$5,004,244
3045	Juniper St	Siluria St	Goliad Rd	\$1,818,118	\$1,153,446
3046	S Presa St	Henderson Ct	SE Loop 410	\$12,698,009	\$11,050,590
3054	Roosevelt Ave	E Pyron Ave	Ashley Rd	\$17,555,067	\$7,591,316
3055	March Ave	Maxwell	Mission Rd	\$1,761,039	\$1,117,234
3057	Maxwell St; Ware Blvd	Curtis St	March Rd	\$564,718	\$358,267
3059	E Bonner Ave; Napier Ave	Roosevelt Ave	Padre Dr	\$3,047,274	\$1,230,029
3061	San Jose Dr	Mission Rd	Napier	\$77,994	\$49,480
3064	Springvale Dr	W US 90	Cul-de-sac	\$10,945,063	\$4,417,964
3067	Old Pearsall Rd	SW Military Dr	Five Palms Dr	\$34,459,248	\$29,988,560
3079	Valley Hi Dr	Springvale Dr	SW Loop 410	\$8,475,670	\$3,605,698
3081	W Military Dr	Five Palms Dr	Old Pearsal Rd	\$30,685,438	\$13,054,123
3082	W Military Dr	Old Pearsall Rd	New Laredo Hwy	\$39,495,643	\$34,371,541
3084	Five Palms Dr	Old Pearsall Rd	Port Victoria St	\$3,612,442	\$2,291,796
3085	Five Palms Dr	Five Palms Dr	Kim Valley St	\$490,666	\$311,287
3088	Holder Ave	Quitana Rd	SW Military Dr	\$1,765,601	\$1,235,370
3089	Bynum Ave	Quitana Rd	Price Ave	\$5,505,740	\$4,791,434
3091	New Laredo Hwy	New Laredo Hwy	Bynum Ave	\$265,103	\$230,709
3092	Bynum Ave	Briggs St	McArthur Ave	\$301,224	\$191,102
3093	McArthur Ave	Bynum Ave	Somerset Rd	\$2,505,406	\$1,803,383
3094	Cassin Rd/New Laredo Hwy	Quitana Rd	Somerset Rd	\$1,885,999	\$1,196,511
3095	Somerset Rd	Somerset Rd	I-35 S	\$15,077,597	\$13,121,454
3096	Somerset Rd	I-35 S	Palo Alto Rd	\$14,960,266	\$13,019,345
3098	Twining Dr; Celeste Dr	Cul-de-sac	Reforma Dr	\$1,958,185	\$1,307,562
3099	Reforma Dr	Celeste Dr	Palo Alto Rd	\$772,385	\$490,014
3103	W Villaret Blvd	Palo Alto Rd	Lytile Ave	\$4,661,898	\$2,304,985
3104	Palo Alto Rd	I-35 S	Somerset Rd	\$8,966,893	\$3,814,673
3105	Schertz Rd; Casa Alto; Casa Oro; Encanta; Risada; La Bahia; El Gusto; Prima Vista;	Nacogdoches Rd	Perrin Beitel	\$7,601,484	\$4,845,218
3109	W Hutchins Place	W Ansley Blvd	Garnett	\$10,597,633	\$4,277,724
3114	Commercial Ave	SW Loop 410	W Hutchins Pl	\$18,298,423	\$15,924,414
3115	Commercial Ave	W Hutchins Pl	I-35 S	\$17,445,682	\$15,182,307
3116	Garnett Ave	Gillette Blvd	W Formosa Blvd	\$2,135,898	\$1,355,051
3117	Burton Ave	W formosa Blvd	W Hutchins Pl	\$538,371	\$341,552
3119	Moursund Blvd	SE Loop 410	Ware Blvd	\$21,741,673	\$18,920,943
3120	Gillette Blvd	Moursund Blvd	Pleasanton Rd	\$885,073	\$357,259
3121	Pleasanton Rd	W Chavaneaux	W Villaret Blvd	\$4,991,977	\$4,344,326
3122	Pleasanton Rd	W Villaret Blvd	Moursund Blvd	\$9,529,129	\$8,292,835



Project Number	Roadway Name	Start	End	Projected Cost	Projected Quick - Build Cost
3123	E Ashley Rd	E Ashley Rd	Pleasanton Rd	\$798,189	\$694,633
3124	Walhalla Ave	SE Loop 410	Pleasanton Hts	\$289,229	\$183,492
3125	Tidewind St; Walhalla Ave	Pleasanton Spg	Yett Ave	\$1,095,678	\$695,117
3126	Yett Ave	Tidewind St	E Ashley Rd	\$1,749,976	\$1,110,215
3127	Bascum Blvd	E Ashley Rd	E Ansley St	\$953,630	\$796,605
3128	E Ansley St	Bascum Blvd	Chaucer Ave	\$913,443	\$579,504
3129	Chaucer Ave	E Ansley St	Creath Pl	\$1,036,087	\$657,311
3130	Fournier Ave	E Formosa Blvd	E Amber St	\$490,071	\$310,910
3131	Creath Pl	Chaucer Ave	Chaucer Ave	\$181,775	\$115,321
3132	Chaucer Ave	Creath Pl	E Amber St	\$327,318	\$207,656
3133	E Amber St	Chaucer Ave	S Flores St	\$561,425	\$356,178
3135	Evergreen	San Pedro Ave	N St Marys	\$2,030,662	\$1,288,287
3136	Logwood Ave	W Hutchins Pl	W Harding Blvd	\$1,044,769	\$662,819
3137	W Harding Blvd	Logwood Ave	S Flores St	\$5,234,036	\$3,320,564
3138	E Harding Blvd	S Flores St	Mission Rd	\$6,417,165	\$3,013,497
3140	SE Military Dr	Roosevelt Ave	Mission Rd	\$4,528,351	\$1,926,440
3142	E White Ave; VFW Blvd	Mission Rd	Riverside Dr	\$5,350,223	\$2,659,535
3143	Riverside Dr; Hot Wells Blvd	VFW Blvd	Goliad Rd	\$11,339,135	\$4,956,119
3144	Hermitage Ct; Merrimac St	S Pressa St	E Southcross Blvd	\$2,656,007	\$2,090,532
3146	E Southcross Blvd	Imogene Dr	Pecan Valley Dr	\$16,752,263	\$7,126,706
3147	E Southcross Blvd	Roosevelt Ave	Imogene Dr	\$10,166,380	\$4,542,322
3148	E Southcross Blvd	Mission Rd	Roosevelt Ave	\$3,635,220	\$1,546,486
3150	Curtis St	E Southcross Blvd	E Pyron Ave	\$1,921,876	\$1,433,181
3155	Pleasanton Rd	Ware Rd	S Flores St	\$27,489,752	\$23,923,276
3158	W Mitchell St; E Mitchell St	S Flores St	S Presa St	\$16,482,506	\$14,344,092
3159	Carolina; Eageland	Riverwalk	Boerne	\$6,575,238	\$5,722,177
3163	Rigsby Ave	Hackberry	Roland Rd	\$30,765,368	\$26,773,918
3166	S Palmetto	I-10	Fair Ave	\$4,402,302	\$3,128,800
3167	S Pine St	I-10	I-37 Access	\$7,980,462	\$4,024,401
3171	Hiawatha St	Stringfellow Dr	Pecan Valley Dr	\$5,473,797	\$4,763,636
3172	Elgin Ave	Rigsby Ave	Hiawatha St	\$5,254,945	\$2,500,242
3173	Chickering Ave	Elgin Ave	Pecan Valley Dr	\$1,567,621	\$994,526
3174	Wade St	Clark Ave	Elgin Ave	\$757,036	\$480,277
3175	Vanderbilt St	Clark Ave	Elgin Ave	\$769,565	\$488,225
3176	Hicks Ave	Elgin Ave	Pecan Valley Dr	\$1,567,649	\$994,544
3177	Amanda St	Rigsby Ave	Martin Luther King Dr	\$3,975,233	\$2,521,957
3178	Kellis Ave	Dead end	Pollydale Ave	\$2,294,348	\$1,669,484
3179	Glover; Meadowlark Ave	Clark Ave	Hiawatha St	\$1,366,316	\$866,814
3180	Hiawatha St	S Gevers St	Meadowlark Ave	\$5,155,198	\$2,080,891
3182	Clark Ave; Coney Ave; Pyle; W Palfrey Ave	Hotwells Blvd	Goliad Rd	\$2,156,814	\$1,368,320
3185	Skyridge Ave	Hiawatha St	Dollarhide Ave	\$626,328	\$397,353
3186	Hiawatha St; Stringfellow Dr	Hiawatha St	E Southcross Blvd	\$2,881,333	\$2,019,574



Project Number	Roadway Name	Start	End	Projected Cost	Projected Quick - Build Cost
3187	Ferrington Dr; Prestwick Blvd	E Southcross Blvd	Pollydale Dr	\$1,957,877	\$1,433,717
3188	Goliad Rd	Hotwells Blvd	City Base Lndg	\$18,897,749	\$16,445,985
3189	Goliad Rd	Fair Ave	Hotwells Blvd	\$14,551,339	\$12,663,471
5001	Lockhill Rd; Pembroke Rd	Southwell Rd	Rochelle St	\$7,067,118	\$4,675,108
5015	Babcock Rd	N Loop 1604 W	UTSA Blvd	\$7,822,122	\$6,807,292
5016	Chase Hill Blvd; George Brackenridge; Walter Brenan	UTSA Blvd	Loop 1604 N	\$2,916,820	\$1,915,737
5018	UTSA Blvd	Valero Way	I-10 W	\$10,539,057	\$9,171,736
5019	Hausman Rd w	Bandera Rd	Loop 1604 W	\$22,225,492	\$19,341,992
5036	Culebra Rd	Galm Rd	FM 1560 N	\$17,585,585	\$7,481,216
5049	Wiseman Blvd	Cottonwood Pkwy	W Loop 1604 N	\$20,663,033	\$8,913,499
5063	Ray Ellison Blvd	SW Loop 410	Medina Base Rd	\$18,161,988	\$15,805,681
5064	Ray Ellison Blvd; US 90 Access Rd	Medina Rd	US 90	\$17,976,086	\$15,643,897
5067	Medina Base Rd	SW Loop 410	Ray Ellison	\$3,991,005	\$1,610,965
5072	Marbach Rd	River Crest	Hunt Lane	\$23,086,688	\$20,091,457
5073	Hunt Lane; Addams Hill	Marbach Rd	US 90	\$18,733,046	\$16,302,650
5074	Demya Drive	SW Loop 410	Hunt Lane	\$2,001,226	\$1,269,613
5076	Marbach Rd	Hunt Lane	SW Loop 410	\$8,943,799	\$7,783,445
5078	Ingram Rd	Highway 151	Marbach Rd	\$16,377,503	\$14,252,712
5079	Hunt Lane	Marbach Rd	Potranco Rd	\$29,556,816	\$12,573,987
5082	Dugas Dr	Rainbow Crk	S Ellison Dr	\$1,664,844	\$1,056,206
5084	Fillmore Dr; Prescott Dr	Potranco Rd	Churing Dr	\$4,504,983	\$2,858,039
5086	Potranco Rd; Dugas Dr	N Ellison Dr	Ingram Rd	\$36,718,347	\$15,743,711
5089	Ingram Rd	Highway 151	W Military Dr	\$11,602,163	\$4,683,202
5094	Ingram Rd; W Military Dr	Culebra Rd	Reed Rd	\$12,968,380	\$11,285,883
5096	W Military Dr	W Loop 1604 N	N Hunt Ln	\$45,069,652	\$39,222,387
5100	Westover Hills Blvd; Raba Dr	N Ellison Dr	Culebra Rd	\$44,778,717	\$19,172,733
5106	Culebra Rd; Ingram Rd	Ingram Rd	NW Loop 410	\$12,787,978	\$11,128,886
5107	Ingram Rd; Wurzbach Rd	NW Loop 410	Bandera Rd	\$21,684,552	\$18,871,232
5108	Misty Way	Grissom Rd	Echo Wind St	\$805,705	\$454,328
5110	Bowens Crossing; Dover RdG; Les Harrison Dr; Weybridge	Culebra Rd	W Loop 1604 N	\$15,682,525	\$6,330,236
5113	Bowen Dr	Bowen Crossing St	Old Tezel Rd	\$2,443,435	\$1,550,158
5114	Mainland Dr	Mainland Dr	Tezel Rd	\$22,306,358	\$10,110,352
5115	April Bend	New Guilbeau Rd	Bowen Crossing St	\$599,613	\$380,405
5116	New Guilbeau Rd; Guilbeau Rd	New Guilbeau Rd	Tezel Rd	\$15,925,666	\$6,807,468
5119	Tezel Rd	Guilbeau Rd	Bandera Rd	\$16,798,458	\$14,619,052
5122	Old Tezel Rd; Pelican Oak Dr; Silverbrook place; Stonefield Place;	New Guilbeau Rd	Wilderness Gap	\$12,424,114	\$5,014,982
5129	Eckhert Rd	Abe Lincoln	Babcock Rd	\$10,844,145	\$9,437,243



Project Number	Roadway Name	Start	End	Projected Cost	Projected Quick - Build Cost
5130	Huebner Rd	Bandera Rd	Babcock Rd	\$13,164,938	\$11,456,940
5132	Wurzbach Rd	Bandera Rd	Babcock Rd	\$16,071,132	\$6,836,941
5136	Cary Grant Dr; Danny Kaye; Desilu Dr; Forest Meadow; Forest Rdg; Oakdell way; Walking Gait Dr	Eckhart Rd	Walking Gait Dr.	\$6,698,584	\$4,441,304
5142	Callaghan Dr	NW Loop 410	W I-10	\$18,020,823	\$7,666,373
5143	Babcock Rd	NW Loop 410	Medical Dr	\$19,550,200	\$17,013,788
5145	Fredericksburg Rd	NW Loop 410	Wurzbach Rd	\$27,543,021	\$23,969,633
5147	Huebner Rd	Babcock Rd	W I-10	\$11,461,140	\$9,974,190
5150	Fairhaven St	Medical Dr	Datapoint Dr	\$1,840,833	\$743,050
5151	Datapoint Dr	Fredericksburg Rd	Wurzbach Rd	\$6,507,389	\$2,626,701
5154	Bluemel; Parkdale; Ewing Halsell	Datapoint Dr	Fredericksburg Rd	\$7,860,785	\$3,172,998
5155	Ewing Halsell; Sid Katz Dr	Wurzbach Rd	Hamilton Wolfe Rd	\$3,432,432	\$1,385,498
5156	Floyd Curl Dr	Fawn Mdws	Huebner Rd	\$3,582,320	\$3,117,555
5159	Fredericksburg Rd	W I-10	Wurzbach Rd	\$13,951,035	\$5,935,014
5160	Gus Eckert Rd	Gus Eckert Rd	Fredericksburg Rd	\$2,108,945	\$851,274
5161	Valero Way	UTSA Blvd	N Loop 1604 W	\$4,224,502	\$1,705,216
5162	Prue Rd	Bandera Rd	Babcock Rd	\$25,508,394	\$22,198,975
5166	Cedar Park; Huntsman Rd	Prue Rd	Hausman Rd W	\$5,464,050	\$3,466,489
5170	Babcock Rd	De Zavala Rd	Old Babcock Rd	\$8,250,603	\$7,180,183
5173	Prue Rd; Research Dr	Babcock Rd	Fredericksburg Rd	\$31,240,899	\$27,187,754
5174	Autumn Vista; Sunset Haven Dr	De Zavala Rd	De Zavala Rd	\$2,931,497	\$1,859,793
5175	Babcock Rd; De Zavala Rd; Spring Time Dr	Prue Rd	I-10 W	\$19,142,866	\$16,659,301
5176	Live Oak; Crockett	Commerce	Austin	\$3,251,608	\$1,312,509
5179	Ashby	N St Marys	Grant	\$8,421,071	\$3,778,245
5180	Rockhill	Nacogdoches Rd	Robin Rest	\$3,356,025	\$2,129,121



Table 8: Complete List of Potential Tier 3 Projects Considered for Future Improvements

Project Number	Roadway Name	Start	End	Projected Cost	Projected Quick - Build Cost
29	Bowie St	Commerce St	Houston St	\$4,589,659	\$2,227,333
32	Brooklyn Ave	N St Marys St	Austin St	\$2,985,230	\$1,129,379
35	Augusta; Giraud	N Main Ave	Lexington Ave	\$1,970,637	\$745,536
46	Avenue E	Houston St	Brooklyn	\$2,551,695	\$965,363
47	Avenue A; Avenue B; Roy Smith	E Jones Ave	E Josephine St	\$3,010,009	\$2,000,435
54	E Carson St	N New Braunfels Ave	N Walters	\$4,087,639	\$1,546,445
58	Saving St	N Flores St	Soledad St	\$229,237	\$136,307
64	McCullough Ave	Dora St	Loop 410	\$19,488,388	\$15,895,853
69	Culebra Rd	I-10	Fredericksburg Rd	\$3,776,562	\$1,428,758
75	Hickman	Blanco Rd	N Flores St	\$732,300	\$435,434
82	Summit	N Flores St	Shook	\$4,387,662	\$2,608,954
84	Lynwood; Hollywood Ave; San Pedro Ave; Beacon Ave	Aganier Ave	Howard St	\$3,034,115	\$2,014,768
86	Beacon Ave; S Audubon; Alamos St	W Hollywood Ave	Olmos Creek	\$8,019,645	\$5,214,390
93	El Monte Blvd; Catalina	Buckeye Ave	McCullough Ave	\$7,465,036	\$4,860,093
113	El Montan Ave; Linda Dr; Mountaintop Blvd	Sprucewood Ln	Olmos Park	\$3,755,767	\$2,258,182
114	Pinewood Ln	El Montan Ave	Errol St	\$5,281,466	\$3,561,717
118	Mertz Dr	Oblate Dr	E Rector St	\$2,713,824	\$1,613,670
119	Castle Hills Dr; Langton; Lour Jon Cir	Honeysuckle Ln	Thames Dr	\$1,895,572	\$1,127,129
120	Thames Dr; Sprucewood; York Dr	Blanco Rd	Jones Maltzberger Rd	\$6,584,740	\$4,336,659
123	Honeysuckle Ln	Loop 410	Antler Dr	\$2,443,535	\$1,515,331
124	Sunset Rd; Maplewood Ln	Mertz Dr	New Braunfels Ave	\$23,017,141	\$18,774,108
125	Errol St	Rexford Dr	Sunset Rd	\$1,222,797	\$752,050
128	Avenue B	Mulberry Ave	Tuleta Dr	\$3,187,747	\$2,600,111
136	Geneseo Rd	New Braunfels Ave	Dover Rd	\$3,839,407	\$2,282,955



Project Number	Roadway Name	Start	End	Projected Cost	Projected Quick - Build Cost
137	Terrell Rd; Patterson Ave; Estes Ave	Estes Ave	Harry Wurzbach Rd	\$16,761,670	\$6,881,492
142	Wiltshire Ave	New Braunfels Ave	Vandiver Rd	\$3,794,049	\$2,255,984
144	Morningside Dr; Argo Ave; Albany St; Alamo Heights Blvd	Jones Maltsberger Rd	Harry Wurzbach Rd	\$10,585,589	\$6,715,609
146	Exeter; Mt Calvary; Northridge Dr; Chevy Chase Dr	Wiltshire Ave	Kenilworth Blvd	\$6,440,317	\$4,250,783
147	Castano Ave; Brees Blvd	La Jara Blvd	Vandiver Rd	\$12,988,209	\$5,037,143
153	Eventide Dr	Morningside Dr	Harry Wurzbach Rd	\$2,783,599	\$1,865,808
154	Nottingham Dr	Treeline Dr	Greenwich Blvd	\$6,319,726	\$3,968,430
156	Country Ln; Crownhill Blvd; Oakhurst Place	Loop 410	Dalwood Place	\$5,854,498	\$3,691,800
157	Seguin Rd; Petroleum Dr; I-35 Access Rd; Holbrook	Salado Creek	Rittiman Rd	\$11,807,294	\$7,461,950
162	Wyndale; Robin Rest Dr; Oak Glen; Kenilworth Blvd; Five Oaks Dr; Dove Haven	Burnside Dr	Eisenhauer Rd	\$9,001,039	\$5,797,938
164	Oakwell Farms Pkwy; Laurens Ln	Harry Wurzbach Rd	Ira Lee Rd	\$2,334,478	\$1,388,107
167	Viesca Ave; Townsend Ave; Greely St; Estes Ave; Crescent St; Cambridge Oval	Argo Ave	Broadway St	\$3,596,821	\$2,138,711
169	Alamo Heights Blvd	Corona Ave	Tuxedo Ave	\$4,541,041	\$1,717,978
175	Sherman St; Larry St; Edgar Dr	Union Pacific Rail Road	N Mel Waiters Way	\$11,078,893	\$4,608,157
178	Lamar St	I-37	N Pine St	\$4,072,868	\$2,632,423
180	Center St	Chestnut	N Pine St	\$1,750,656	\$1,040,960
184	Florida	Boerne St	S Hackberry St	\$3,541,917	\$2,551,882
189	J St; Roland Ave	Clark Ave	I-10	\$2,018,256	\$1,410,727
202	Frost Bank Center Dr	E Houston St	I-35	\$7,919,046	\$2,995,953
211	Crystal Run; Crystal Bow	Huebner Creek	Loop 410	\$2,375,237	\$1,412,343



Project Number	Roadway Name	Start	End	Projected Cost	Projected Quick - Build Cost
212	Patricia; Serenade; Moonglow; Crestpark	West	Ramsey	\$5,116,090	\$3,252,734
218	Research Plaza	City Base Landing	S New Braunfels	\$7,040,494	\$3,128,853
246	Billy Mitchell	Frank Luke	General Hundell	\$12,165,733	\$9,923,074
247	General Hudnell	36th St	Cupples	\$10,250,239	\$8,360,686
253	Somerset	MacArthur	Zarzamora St	\$22,953,165	\$18,721,925
259	Cascade Pkwy	Barlite	Zarzamora St	\$3,548,410	\$2,320,574
261	Pyron	Somerset Rd	I-35	\$5,820,867	\$3,882,451
272	Waters Edge; Meadow Path	Cable Ranch	Meadow Way	\$2,513,326	\$1,561,597
1004	Timbercreek	Loop 410	W Military	\$2,187,116	\$876,819
1006	Campfire Lane Future Trail	Bronco	Pinn	\$5,589,322	\$3,601,268
1009	Elmer Blvd; Avril Ln	Pinn	Leon Creek Greenway	\$2,030,542	\$1,207,384
1012	US 90 Access Road	W Military	Acme	\$16,821,664	\$13,720,720
1021	Bandera Rd	Loop 410	Callaghan Rd	\$10,075,648	\$4,578,638
1035	Centerview	Callaghan Rd	Babcock Rd	\$6,514,259	\$2,994,719
1060	Kampmann; Leming	Club	Babcock Rd	\$2,206,975	\$1,522,941
1085	Ridgewood	Fredericksburg Rd	Neer	\$1,442,573	\$857,770
1106	Delgado	28th St	Frio St	\$9,836,881	\$6,253,610
1108	N Brazos; San Jacinto; Salinas	Poplar	Trinity	\$3,853,852	\$2,628,888
1127	Merida	Barclay	Brazos	\$6,070,620	\$3,820,309
1138	Pendleton; Furnish	Frio City Road	I-10	\$3,590,304	\$2,472,180
2006	Bulverde Rd	US 281	TPC Pkwy	\$17,106,156	\$13,952,767
2009	Bulverde Rd	TPC Pkwy	E Evans Rd	\$7,612,437	\$6,209,143
2013	E Evans Rd	US 281	Dusty Canyon	\$62,706,190	\$25,446,096
2014	Canyon Gold Rd	Wilderness Oak	Stone Oak Pkwy	\$33,094,661	\$13,195,669



Project Number	Roadway Name	Start	End	Projected Cost	Projected Quick - Build Cost
2015	Wilderness Oak	H-E-B at Hardy Oak/Wilderness Oak	Blanco Rd	\$58,069,878	\$23,153,912
2017	Kights Cross Dr	Blanco Rd	Evans Rd	\$21,252,922	\$8,521,151
2021	Hardy Oak Blvd	Knights Cross Dr	Las Lomas Elementary School	\$9,481,413	\$7,733,588
2025	Rogers Ranch	N Loop 1604	Point Bluff Dr	\$5,595,536	\$3,493,404
2031	E Sonterra Blvd	Stone Oak Pkwy	US 281	\$29,742,003	\$24,259,293
2032	N Loop 1604 Service Rd	Stone Oak Pkwy	US 281	\$10,607,092	\$8,651,756
2034	N Loop 1604 Service Rd	Salado Creek Greenway Trail Connection	Stone Oak Pkwy	\$9,323,876	\$5,670,778
2036	Redland Rd	US 281	N Loop 1604	\$22,318,798	\$9,342,633
2039	Evans Rd	Green Mountain Rd	I-35	\$56,579,536	\$46,149,534
2042	Hardy Oak Blvd	Heubner Rd	N Loop 1604	\$25,329,786	\$20,660,435
2044	Nacogdoches Rd	N Loop 1604	E Evans Rd	\$10,257,869	\$8,366,910
2045	Lookout Rd	N Loop 1604	Evans Rd	\$12,797,299	\$10,438,216
2046	Chippewa Blvd/Old Austin Rd	N Loop 1604	Brightleaf Dr	\$3,342,148	\$1,987,279
2050	Lockhill-Selma	N Loop 1604	Huebner Rd	\$47,138,424	\$38,448,818
2053	NW Military Hwy	N Loop 1604	Huebner Rd	\$21,701,565	\$9,050,278
2056	Stockbridge Ln/Big Meadows Ln	Vance Jackson Rd	Dead End	\$3,813,178	\$2,478,008
2060	Powhatan Dr	Colony Dr	Callaghan Rd	\$3,755,691	\$2,233,177
2064	Vance Jackson Rd	Callaghan Rd	Loop 410	\$6,075,382	\$4,955,432
2067	Wurzbach Rd	I-10 W	Lockhill-Selma	\$18,977,677	\$7,566,874
2068	Wurzbach Pkwy	Lockhill-Selma	West Ave	\$36,922,571	\$30,116,179
2072	Lockhill-Selma	Huebner Rd	Wurzbach Pkwy	\$8,402,230	\$6,853,344
2073	Lockhill-Selma	Wurzbach Pkwy	NW Military Hwy	\$16,576,105	\$13,520,428
2077	NW Military Hwy	Lockhill-Selma	Loop 410	\$19,633,815	\$7,828,493
2080	Zornia Dr	E Castle Ln	NW Military Hwy	\$1,240,167	\$948,066
2081	E Castle Ln	Lemonwood Dr	NW Military Hwy	\$3,877,550	\$2,305,635
2082	Morey Peak/Sunflower	NW Military Hwy	Blanco Rd	\$5,125,148	\$3,468,769
2085	Sir Winston	Blanco Rd	Parliament Rd	\$1,992,603	\$753,846
2086	Lockhill-Selma	Blanco Rd	San Pedro Ave	\$5,330,904	\$4,348,193



Project Number	Roadway Name	Start	End	Projected Cost	Projected Quick - Build Cost
2089	Blanco Rd	Bitters Rd	Wurzbach Pkwy	\$27,455,372	\$11,186,113
2090	Cadillac Dr	Neighborhood	Blanco Rd	\$2,989,565	\$1,777,629
2092	W Bitters Rd	N Loop 1604	Blanco Rd	\$28,188,059	\$22,991,807
2096	Tower Dr	W Bitters Rd	north of Estate Ln	\$7,212,480	\$4,288,623
2098	Mecca/Sequoia	north of Estate Ln	US 281	\$3,158,793	\$1,940,632
2099	El Cerrito Cir	Donella Dr	Sequoia Dr	\$796,803	\$473,788
2101	Blanco Rd	N Loop 1604	W Bitters Rd	\$27,894,600	\$11,122,275
2104	Lorene	W Ramsey	Lockhill-Selma	\$3,574,384	\$2,360,538
2108	McCullough/Contessa	Loop 410	US 281	\$4,845,478	\$3,163,566
2111	Henderson Pass	US 281	N Loop 1604	\$24,594,592	\$20,060,768
2117	Heimer Rd	Thousand Oaks	Brook Holw	\$4,858,077	\$3,099,317
2123	Oakline Dr	Susancrest Dr	Jones Maltsberger Rd	\$3,830,594	\$2,488,364
2128	E Nakoma/Jones Maltsberger Rd	North Loop Rd	Starcrest Dr	\$18,663,651	\$7,703,627
2138	Redland Rd	N Loop 1604	Bulverde Rd	\$10,423,685	\$3,943,514
2141	Knollcreek	Bulverde Rd	Judson Rd	\$28,773,660	\$10,885,720
2142	Briarcrest Dr	Bulverde Rd	Classen Rd	\$3,450,352	\$2,051,618
2144	Bellcrest Dr	Bell Dr	Higgins Rd	\$2,135,632	\$1,269,871
2147	O'Connor Rd	N Loop 1604	Nacogdoches	\$28,444,251	\$11,341,434
2150	Leonhardt Dr	Nacogdoches Rd	N Weidner Rd	\$9,048,111	\$3,423,103
2151	Bell Dr	Nacogdoches Rd	Neighborhood	\$2,028,666	\$767,490
2154	Nacogdoches Rd	Higgins Rd	Judson Rd	\$15,458,834	\$6,163,824
2156	Stahl Rd	Higgins Rd	Nacogdoches	\$47,115,563	\$38,430,171
2157	Judson Rd	N Loop 1604	Nacogdoches	\$11,760,110	\$9,592,224
2158	Judson Rd	Nacogdoches Rd	Toepperwein Rd	\$32,616,979	\$26,604,290
2159	Lookout Rd	N Loop 1604	Judson Rd	\$11,349,996	\$4,417,370
2160	Lookout Rd/N Weidner Rd	Schertz Rd	Toepperwein Rd	\$14,306,273	\$5,412,384
2161	N Weidner/Schertz	dead end	Crosswinds Wy	\$974,856	\$579,661
2163	O'Connor Rd	Crosswinds Wy	Randolph Blvd	\$8,755,899	\$3,608,851
2165	Wenzel Rd	Judson Rd	Toepperwein Rd	\$2,703,420	\$1,842,653
2166	Toepperwein Rd	Nacogdoches Rd	Lookout Rd	\$12,985,207	\$10,591,484
2167	Toepperwein Rd	Lookout Rd	I-35	\$17,778,822	\$14,501,433
2170	Naco-Perrin Blvd	Nacogdoches Rd	El Sendero	\$9,213,472	\$3,950,939



Project Number	Roadway Name	Start	End	Projected Cost	Projected Quick - Build Cost
2174	Hidden Dr/Loop 410 Access Rd	Salado Creek Greenway Crossing	Starcrest Dr	\$2,673,419	\$1,716,340
2183	Crestway Rd	Eaglecrest Blvd	Kitty Hawk Rd	\$16,625,693	\$7,072,649
2186	FM 1976/Gibbs-Sprawl Rd	Branching Ct	Toepperwein Rd	\$14,358,897	\$11,711,944
2191	FM 78	N Foster Rd	Beech Trl	\$20,483,731	\$8,167,376
2192	FM 78	Gibbs-Sprawl Rd	N Foster Rd	\$13,128,063	\$5,234,487
2195	Toepperwein Rd	Judson Rd	Kitty Hawk Rd	\$18,207,250	\$14,850,884
2196	Toepperwein Rd	Kitty Hawk Rd	FM 1976	\$9,952,780	\$8,118,061
2204	New World Dr/O'Connor Rd	Randolph Blvd	Crestway Rd	\$18,823,798	\$7,505,519
2205	New World Dr	Crestway Rd	Walzem Rd	\$9,376,312	\$3,547,269
2206	Hedrick Farm/Mesquite Farm/Tabak Farm	Walzem Rd	Gibbs-Sprawl Rd	\$3,489,864	\$2,285,761
2207	Branching Ct	Walzem Rd	Gibbs-Sprawl Rd	\$2,705,577	\$1,582,282
2209	Binz-Engelman Rd	FM 1516 N	N Loop 1604	\$13,869,724	\$5,927,527
2210	Walzem Rd	Woodlake Pkwy	Gibbs-Sprawl Rd	\$12,539,970	\$4,999,999
2214	Woodlake Pkwy	Walzem Rd	FM 78	\$12,456,444	\$10,160,194
2215	Woodlake Pkwy	FM 78	Binz-Engelman Rd	\$9,849,564	\$8,033,873
2224	Candlemeadow/Mystic Sunrise Dr	Summer Fest	N Foster Rd	\$3,922,780	\$2,332,530
2227	Binz-Engelman Rd	FM 78	Buzz Aldrin Dr	\$4,462,774	\$3,640,096
2230	Texas Palm Dr	dead end	Binz-Engelman Rd	\$1,989,798	\$1,183,157
2233	Brucks Dr/Elm Trail Dr	Walzem Rd	FM 78	\$4,494,746	\$2,672,627
2234	Donshire Dr/Longing Trl/Manderly Pl	Elm Trail Dr	FM 78	\$5,814,368	\$3,457,290
2235	Castle Cross	Midcrown Dr	Gibbs-Sprawl Rd	\$1,666,537	\$990,942
2239	Business Park	Rittiman Rd	Service Center Dr	\$1,815,043	\$1,079,245
2244	Roughrider Dr/Windsor Hill	Fourwinds Dr	Windway Dr	\$2,899,368	\$1,096,896
2245	Crestwind Dr	Fourwinds Dr	Windway Dr	\$1,954,662	\$1,162,265



Project Number	Roadway Name	Start	End	Projected Cost	Projected Quick - Build Cost
2246	Faircrest Dr	Windway Dr	Midcrown Dr	\$432,709	\$257,294
2248	Windrock Dr/Windfield Blvd	Midcrown Dr	Eaglecrest Blvd	\$2,442,102	\$1,452,102
2250	Lakefront	Forest Meadows	Cloudy Meadow	\$485,258	\$288,540
2252	Sinclair Rd	Loop 410	Vista Lake	\$8,763,156	\$7,147,735
2253	New Sulphur Spgs	Loop 410	Heather Meadow	\$13,099,079	\$10,684,364
2260	Southton Rd	Loop 410	S Blue Wing Rd	\$16,419,693	\$6,628,702
2262	US 281 S	Loop 410	Old Corpus Christi Rd	\$26,457,019	\$21,579,871
2266	US 281 S	Mission Grande	Mitchell Lake Trailhead	\$9,611,359	\$7,839,579
2267	Mission Grande	Mission Del Lago Trailhead	US 281 S	\$2,137,722	\$1,481,762
2268	Mitchell Lake Trail	Medina River Greenway Park Trl	Mitchell Lake Trailhead	\$1,859,537	\$1,239,992
2269	Del Lago Pkwy	Vermillion Rd	Janzen Rd	\$2,777,029	\$1,651,253
2274	University Wy	Loop 410	Jaguar Pkwy	\$23,210,213	\$18,931,589
2280	Watson Rd	Somerset Rd	SH 16 S	\$9,416,618	\$5,624,189
2282	E Chavaneaux	SE Loop 410 Access Rd	Espada Rd	\$7,174,761	\$4,370,051
2284	Shane Rd	Villamain	Bobbie Allen Wy	\$0	\$0
2286	Moursund Blvd	SE Loop 410 Access Rd	Pleasanton Rd	\$6,182,092	\$2,908,525
2287	SW Loop 410 Access Rd	University Way	W Chavaneaux	\$3,315,698	\$2,704,475
2288	Charpak Dr/W Vasquez Cir/Margarita Lp	Green Rd	Nieto Dr	\$3,472,780	\$2,064,955
2289	Citron Garden	Green Rd	Colonial Park	\$815,980	\$485,191
2290	Delight Grove/Jackson Summit	Citron Garden	Colonial Park	\$2,026,169	\$1,204,783
2291	Roan Park	Roan Valley	E Evans Rd	\$422,519	\$251,235
2292	Encino Rio	E Evans Rd	Caliza Dr	\$4,018,982	\$1,602,469
2294	Dominion Dr	I-10	Ambassador Ln	\$2,353,539	\$1,399,441
2296	Wood Valley; Interpark	Walker Ranch	Salado Creek Greenway	\$6,728,742	\$2,545,634
2298	Inverness Blvd	Neighborhood	Wurzbach Pkwy	\$0	\$0
2300	Cliffside Dr	Salado Creek	NW Military Hwy	\$3,031,357	\$2,013,128
3002	Gembler Rd	Frost Bank Center Dr	N WW White Rd	\$112,920	\$92,104
3005	Upland Rd	E Houston St	Martin Luther King Dr	\$3,369,124	\$2,213,969



Project Number	Roadway Name	Start	End	Projected Cost	Projected Quick - Build Cost
3008	Wheatley Ave	Martin Luther King Dr	Bunche Rd	\$3,264,371	\$2,266,842
3018	Sinclair Rd	Roland Rd	S WW White Rd	\$2,254,910	\$1,551,444
3020	Kaiser Dr; Winneway Dr; Kaiser Dr	Rigsby Ave	Sinclair Rd	\$2,476,246	\$1,472,404
3022	Diane Rd	Rice Rd	Rigsby Ave	\$2,214,314	\$1,316,657
3023	Willwnbrock Ave	Benham Dr	Rigsby Ave	\$2,850,518	\$1,905,599
3039	Prestwick Blvd; Ferrington Dr	Pollydale Dr	E Southcross Blvd	\$0	\$0
3042	City Base landing	Goliad Rd	Greenfield Parking Lot	\$18,289,017	\$7,418,935
3051	Mission Rd; Villamain Rd	99th St	SE Loop 410	\$40,231,727	\$32,815,318
3053	Espada Rd; Ashley Rd; Shane Rd.	Roosevelt Ave	Southton Rd	\$16,684,231	\$7,049,741
3056	No Street name	S Flores St	March Rd	\$2,197,231	\$1,792,188
3065	Medina Base Park Trail	Springvale Dr	Medina Base Rd	\$2,205,071	\$1,798,583
3068	Old Pearsall Rd	Five Palms Dr	SW Loop 410	\$9,206,849	\$4,241,218
3069	PVT Trail in Millers Pond Parl	Bright Valley Dr	Old Pearsall Rd	\$2,572,480	\$2,098,263
3077	SW Loop 410 Acess Rd	Old Pearsall Rd	SW Loop 410 Access Rd	\$6,575,738	\$5,363,552
3080	W Military Dr	W US 90	Five Palms Dr	\$39,111,162	\$15,594,598
3083	Berman; Clarence Tinker	General Hudnell	Leon Creek Greenway	\$11,517,577	\$9,394,400
3086	Quitana Rd	SW Loop 410	Plumnear	\$15,672,825	\$6,288,044
3097	Fairmeadows St	Somerset Rd	Palo Alto Rd	\$10,286,592	\$4,101,521
3101	Palo Alto Rd	Fairmeadows St	I-35 S	\$1,906,852	\$721,405
3106	Jennifer Dr; Lytle Ave	S Zarzamora St	Edenvale Dr	\$4,790,397	\$3,269,722
3107	Lytle Ave; W Ansley Blvd	Edenvale Dr	Sundrop Bay	\$1,674,601	\$995,737
3108	W Ansley Blvd	Sundrop Bay	I-35 S	\$4,445,074	\$1,681,671
3112	W Villaret Blvd	George Patton Dr	Pleasanton Rd	\$6,425,290	\$3,892,291
3139	Mission Rd	E Harding Blvd	SE Military Dr	\$1,220,017	\$995,116
5005	Hermosa Hill; Stonewall Hill	Cielo Vista Dr	Stonewall Pkwy	\$7,385,643	\$2,794,154
5006	Setina Hill; Aster Trail; Cypress Trail; Stonewall Bnd; Senna Trail; Penstemon Trailc	Cielo Vista Dr	Stonewall Hill	\$4,845,477	\$2,881,176



Project Number	Roadway Name	Start	End	Projected Cost	Projected Quick - Build Cost
5007	Stonewall Pkwy	I-10 W	Milsa Drive	\$5,140,087	\$4,192,551
5008	Milsa Drive; Heuermann Rd	Stonewall Pkwy	Babcock Rd	\$11,742,073	\$9,577,512
5009	Bella Sky; Bella Cloud; Cresta Bulivar	Cresta Bella	Heuermann Rd	\$2,931,152	\$1,742,896
5010	Camp Bullis Rd	Babcock Rd	I-10 W	\$21,274,203	\$17,352,467
5011	Chase Hill Blvd	Babcock Rd	Seco Creek St	\$3,182,407	\$1,203,976
5012	Babcock Rd	Kyle Seale Pkwy	Camp Bullis Rd	\$8,072,166	\$6,584,125
5013	Babcock Rd	Camp Bullis Rd	Loop 1604 S	\$10,720,417	\$8,744,191
5014	Kyle Seale Pkwy; Sonoma Pkwy	Babcock Rd	N Loop 1604 W	\$72,654,242	\$29,104,379
5020	Leslie Rd	Bandera Rd	Braun Rd	\$18,565,920	\$7,402,697
5021	Braun Rd	FM 1560 N	W Loop 1604 N	\$13,566,984	\$11,066,015
5024	Wildhorse Pkwy	Appaloosa Bay	Mustang Farm	\$1,962,605	\$742,497
5028	Galm Rd	FM 1560 N	Galm Rd	\$22,260,435	\$18,156,895
5029	Autumn Sun	Guilbeau Rd	Braun	\$3,873,177	\$2,303,035
5030	Pinto Canyon; Silver Spot	Culebra Rd	Galm Rd	\$14,687,498	\$11,979,971
5032	Culebra Rd	Galm Rd	Clipper Hbr	\$16,220,143	\$13,230,084
5039	Lone Star Pkwy; Wild Pine	Culebra Rd	Alamo Ranch Pkwy	\$18,526,482	\$7,008,983
5040	Alamo Pkwy	Culebra Rd	Alamo Ranch Pkwy	\$16,578,870	\$13,522,683
5041	Alamo Ranch Pkwy	W Loop 1604 N	Calaveras Way	\$28,876,568	\$23,553,394
5046	Cottonwood Way	Alamo Pkwy	Sage Run	\$7,723,369	\$2,921,924
5047	Sage Run	Cottonwood Pkwy	Westcreek Oaks	\$2,379,868	\$1,415,097
5048	Wiseman Blvd	Talley Rd	Cottonwood Way	\$36,457,444	\$14,536,495
5052	Potranco Rd	W Loop 1604 N	Grosenbacher Rd	\$20,134,224	\$16,422,635
5054	W Military Dr	W Loop 1604 N	N Grosenbacher Rd	\$23,174,935	\$18,902,814
5055	American Lotus; Dove Canyon; 40548	W Loop 1604 S	Grosenbacher Rd	\$7,299,243	\$2,903,405
5061	Covel Rd	Ray Ellison	Old Pearsall Rd	\$18,083,122	\$14,749,638
5065	Fisher Rd; Quintana Rd	SW Loop 410	I-35 S	\$7,626,551	\$3,350,571
5068	I-10 W Access Rd	Boerne Stage	Stonewall Hill	\$9,436,434	\$7,696,900
5077	Lakeside Pkwy	Cable Ranch Rd	SW Loop 410	\$10,363,435	\$8,453,016
5080	Clover Crk; Rainbow Crk; Wooden Fox	River Crst	Clover Crk	\$4,008,687	\$2,383,611
5081	Manor Crk; River Crest; Rousseau	Marbach Rd	Rainbow Crk	\$5,060,332	\$3,008,931
5083	Heritage Farm Rd	Hunt Lane	S Ellison Dr	\$4,182,639	\$1,582,386
5085	Potranco Rd; Filmore Dr	W Loop 1604 N	N Ellison Dr	\$19,448,804	\$15,863,566
5087	Potranco Rd	Ingram Rd	Ingram Rd	\$36,035,718	\$14,368,342



Project Number	Roadway Name	Start	End	Projected Cost	Projected Quick - Build Cost
5088	W Military Dr	Potranco Rd	NW Loop 410	\$9,348,755	\$7,625,384
5090	Rousseau	W Military Dr	Rousseau	\$3,331,609	\$2,048,158
5092	N Ellison Dr	Potranco Rd	W Military Dr	\$12,415,756	\$10,127,007
5093	N Hunt Ln; State Hwy 151 Access Rd	Potranco Rd	W Military Dr	\$16,824,860	\$13,723,326
5097	Star Creek Dr	Westover Vw	Oak MI	\$1,797,416	\$1,068,764
5098	Copperfield ; Rousseau	W Military Dr	Copperfield Rd	\$4,009,200	\$2,383,916
5099	Wiseman Blvd	W Loop 1604 N	Westover Hills Blvd	\$36,734,957	\$14,314,421
5101	N Hunt Ln	W Military Dr	Westover Hills Blvd	\$13,643,493	\$5,440,002
5102	Rogers Rd	Culebra Rd	Westover Hills Blvd	\$41,008,329	\$33,448,759
5111	Tezel Rd	Grissom Rd	Guilbeau Rd	\$20,642,366	\$16,837,104
5112	Silenr Sunrise	Heath Circle Dr	Tezel Rd	\$18,390,247	\$7,776,221
5118	Wickersham	Old Tezel Rd	Guilbeau Rd	\$12,569,120	\$4,755,179
5120	Braun Rd	Tezel Rd	W Loop 1604 N	\$9,566,481	\$7,802,974
5125	Bandera Rd; Mystic Park	Braun Rd	Huebner Rd	\$54,755,618	\$21,832,434
5127	Aids Dr; Forest Way; Seneca Dr	Aids Dr	Forest Rdg	\$4,856,061	\$2,887,469
5133	Evers Rd	Huebner Rd	NW Loop 410	\$23,429,156	\$10,533,754
5138	Rochelle Dr; Whitby Dr;	Huebner Rd	Pembroke Rd	\$7,154,700	\$4,254,266
5139	Abe Lincoln	Eckhert Rd	Horn Blvd	\$9,795,328	\$3,705,792
5140	Oxford Trace St; Hollyhock Rd;	Rochelle St	Southwell Rd	\$15,275,271	\$5,778,977
5141	Merkens; Newcome Dr	Cary Grant Dr	Cambray Dr	\$3,681,453	\$2,189,034
5149	Horizon Hill Blvd	Callaghan Rd	Medical Dr	\$5,587,540	\$2,113,891
5152	Gardendale	Datapoint Dr	Bluemel Rd	\$4,170,949	\$1,577,963
5157	Oakland Rd	Prue Rd	Huebner Rd	\$9,396,126	\$3,554,765
5158	Network Blvd; Northwest Pkwy; Silicon Dr; Southwell Rd; University Hts	Hausman Rd	Huebner Rd	\$21,702,001	\$17,701,404
5163	Old Prue Rd	Bandera Rd	Prue Rd	\$2,097,181	\$793,411
5164	S Hausman Rd S	Champion Gate	Prue Rd	\$8,205,724	\$3,104,409
5167	Spring Brook Dr; Spring Leaf; Spring Mont Dr	Spring Crest St	Spring Time St	\$2,515,229	\$1,520,544
5171	Summit Pkwy	Evers Rd	Callaghan Rd	\$11,149,207	\$4,217,995
5181	Electra; Sunbelt; Northeast Pkwy; Olney; Seidel	Salado Creek	Vandiver	\$15,680,139	\$11,249,509



Table 9: Complete List of Potential Tier 4 Projects Considered for Future Improvements

Project Number	Roadway Name	Start	End	Projected Cost	Projected Quick - Build Cost
19	Camino Lavaca	Carolina St	Cesar Chavez Blvd	\$4,749,961	\$3,668,072
45	Jones Maltsberger Rd	Oblate Dr	Basse Rd	\$13,038,631	\$4,922,042
129	Old Austin Rd; Westgate	Eleanor Ave	Pershing Ave	\$3,582,476	\$1,283,173
138	Eldon Rd	Geneseo Rd	Rittiman Rd	\$5,211,970	\$3,192,357
139	Garraty Rd; Grove Place	Broadway St	Harry Wurzbach Rd	\$16,770,793	\$7,147,832
155	Flyway South	Basse Rd	Loop 410	\$8,186,126	\$4,608,414
163	Biz-Engleman Rd	Union Pacific Rail Road	I-35	\$7,839,571	\$2,807,981
165	Dalewood Place; Loop 410 Access Rd	Wyndale St	?	\$4,623,707	\$2,773,210
168	La Jara Blvd; Corona Ave; Alamo Heights Blvd	Argo Ave	Tuxedo Ave	\$5,737,088	\$3,229,718
185	Carolina	Boerne St	0 Cherry St	\$3,059,601	\$1,095,889
187	Essex St; Hoefgen Ave; W Boyer	S Presa St	S Cherry St	\$1,888,769	\$1,063,290
204	Old Seguin Rd; I-35 Access Rd; Binz-Engleman Rd	N Walters	Loop 410	\$29,064,420	\$22,444,474
213	Sandman	Patricia	Rhapsody	\$2,772,278	\$1,687,995
216	Southton Extension	Loop 410	Global Way	\$6,692,844	\$4,284,278
230	Tupper; Garnett	Southcross	Hutchins	\$6,130,568	\$3,451,229
244	Growdon	36th St	Thompson	\$3,573,476	\$2,139,032
245	Frank Luke	Billy Mitchell	36th St	\$8,307,338	\$2,975,526
249	US 90 Access Road	Leon Creek	36th St	\$15,304,866	\$11,818,907
266	Leon Creek Connectivity Improvements - The Rim			\$2,968,851	\$2,292,642
267	French Creek Extension	Nani Falcone Park	Braun Rd	\$1,380,262	\$1,065,883
268	French Creek Connection	French Creek	Exbourne	\$146,226	\$112,920
269	Culebra Creek Connectivity Improvements			\$2,968,851	\$2,292,642
270	Leon Creek Connectivity Improvements - Misty Oaks			\$754,647	\$582,762



Project Number	Roadway Name	Start	End	Projected Cost	Projected Quick - Build Cost
271	Huebner Creek Connectivity Improvements			\$742,213	\$573,160
273	Salado Creek North Connectivity Improvements			\$4,230,183	\$3,266,683
274	Salado Creek South Connectivity Improvements			\$1,756,419	\$1,356,363
275	Brooks Area Connectivity Improvements			\$6,707,179	\$5,179,498
276	Mission Reach Connectivity Improvements			\$2,372,864	\$1,832,402
277	Future Menger Creek Trail	Onslow	Frost Bank Center Pkwy	\$5,941,193	\$4,587,979
278	Mayfair; Titan; Asteroid	Wroxton	Salado Cliffs	\$12,449,606	\$9,613,984
279	Stahl	Bulverde Rd	Classen Rd	\$14,261,244	\$11,012,988
1022	Evers Rd	Loop 410	Bandera Rd	\$15,346,171	\$11,850,803
1054	Siesta; Crossroads	Gentlemen	Dewherst	\$11,338,350	\$5,699,625
1064	Mulberry; Misteltoe; Manor	Saint Cloud	Kampmann	\$4,682,132	\$2,924,144
1142	Other WSC Trail Connections			\$5,237,552	\$4,044,605
2001	Evans Rd	TPC Pkwy	W Green Mountain Rd	\$48,973,731	\$19,031,247
2002	Blanco Rd	North of Specht Rd	W Borgfeld Dr	\$32,968,105	\$12,445,355
2004	W Borgfeld Dr	Blanco Rd	Bulverde Rd	\$30,155,047	\$23,286,691
2005	Bulverde Rd	W Borgfeld Dr	US 281	\$24,500,818	\$18,920,315
2007	Marshall Rd	US 281	Bulverde Rd	\$12,255,398	\$4,792,272
2008	Bulverde Green/Wilderness Oak	Bulverde Rd	TPC Pkwy	\$14,869,355	\$8,370,766
2012	Dusty Canyon	E Evans Rd	N Loop 1604	\$15,586,107	\$8,774,264



Project Number	Roadway Name	Start	End	Projected Cost	Projected Quick - Build Cost
2019	Encino Commons/Franklin Park	TPC Pkwy	Evans Rd	\$13,211,138	\$4,987,163
2020	Encino Rio	US 281	Encino Ledge	\$10,817,782	\$4,627,497
2023	NW Military Hwy	Dwight D. Eisenhower Park	N Loop 1604	\$24,044,128	\$9,369,560
2024	Shavano Ranch	NW Military Hwy	Cornerstone Christian Schools	\$3,173,422	\$1,786,491
2026	Huebner Rd	Stone Oak Pkwy	US 281	\$48,575,000	\$37,511,167
2033	N Loop 1604 Service Rd	Blanco Rd	Stone Oak Pkwy	\$0	\$0
2035	Dry Creek Way	x	Redland Rd	\$7,147,162	\$2,698,031
2037	Gold Canyon Rd	E Sonterra Blvd	Bulverde Rd	\$41,015,187	\$15,483,103
2038	N Loop 1604 Service Rd	US 281	Redland Rd	\$13,067,596	\$10,091,215
2040	Green Mountain Rd	Evans Rd	Stahl Rd	\$24,735,440	\$9,503,448
2041	N Loop 1604 Service Rd	Emerald Forest Dr	Judson Rd	\$17,920,072	\$13,838,452
2043	FM 2252	E Evans Rd	Tonkawa Pass	\$10,290,296	\$7,946,496
2047	Brightleaf Dr	Lookout Rd	I-35	\$2,919,472	\$1,643,529
2065	Dreamland	Vance Jackson Rd	Lockhill-Selma	\$17,239,373	\$13,312,795
2066	Orsinger Ln	Vance Jackson Rd	Lockhill-Selma	\$11,001,606	\$4,451,515
2075	Jackson-Keller Rd	Vance Jackson Rd	Loop 410	\$8,237,107	\$6,360,957
2079	West Ave	Lockhill-Selma	Loop 410	\$22,384,226	\$17,285,815
2095	Winding Way	W Bitters Rd	US 281	\$5,500,856	\$3,442,941
2177	Olympia Pkwy/Universal City Blvd	I-35	W Aviation Blvd	\$52,124,528	\$40,252,226
2178	Aviation Blvd/FM 1976	N Loop 1604	E FM 1518 N	\$18,311,262	\$6,558,736
2179	E FM 1518 N	FM 1976	I-10	\$71,453,518	\$26,973,477
2180	N Graytown Rd/Green Rd	N Loop 1604	Green Rd	\$58,199,562	\$22,136,048
2181	Kitty Hawk Rd	Toepperwein Rd	Universal City Dr	\$22,504,724	\$8,495,462



Project Number	Roadway Name	Start	End	Projected Cost	Projected Quick - Build Cost
2182	Kitty Hawk Rd	Crestway Rd	Toepperwein Rd	\$16,822,381	\$6,350,395
2185	FM 1976	Toepperwein Rd	N Loop 1604	\$22,109,608	\$17,073,746
2189	Schaeffer Rd/Rocket Ln	FM 78	N Loop 1604	\$18,245,049	\$6,887,448
2190	FM 78	Beech Trl	S Seguin Rd	\$24,410,842	\$9,215,016
2193	Binz-Engelman Rd	Woodlake Pkwy	FM 1516 N	\$20,016,595	\$15,457,455
2197	S Seguin/Toepperwein Rd	FM 1976	Schaeffer Rd	\$17,736,656	\$13,696,812
2198	FM 1516 N	Schaeffer Rd	Crestway Rd	\$18,518,043	\$14,300,225
2199	FM 1516 N	Crestway Rd	I-10	\$34,852,356	\$26,914,103
2200	FM 1516 N	I-10	FM 1346	\$40,590,678	\$15,322,852
2208	Walzem Rd	Gibbs-Sprawl Rd	FM 1516 N	\$37,192,508	\$14,040,054
2217	Glen Mont Dr	Crestway Rd	Branching Ct	\$6,073,143	\$3,418,901
2220	Crestway Rd	Kitty Hawk Rd	Gibbs-Sprawl Rd	\$17,400,586	\$7,112,485
2221	Glen Fair/Miller Rd	New World Dr	Gibbs-Sprawl Rd	\$5,906,438	\$3,325,054
2228	Gibbs-Sprawl Rd	Rittiman Rd	FM 78	\$11,714,024	\$4,909,125
2231	Crestway Rd	Brucks Rd	FM 1516 N	\$19,021,146	\$7,724,241
2232	Beech Trl	Elm Trail Dr	Walzem Rd	\$7,045,598	\$3,966,349
2236	Hoeneke/Old Seguin Rd	Timothy J. Wilson Trail	Summer Fest	\$2,855,716	\$2,205,275
2237	Boenig Dr/Scenic Lake Dr	N Graytown Rd	Dead End	\$4,620,420	\$2,601,085
2255	Hildebrandt; S WW White	S WW White Rd	dead end	\$42,522,264	\$15,230,644
2257	Old Corpus Christi Rd	US 181 S	Donop Rd	\$12,365,831	\$4,940,154
2258	Donop Rd	Old Corpud Christi Rd	Southton Rd	\$10,106,984	\$3,620,124
2259	Southton Rd	S Blue Wing Rd	Donop Rd	\$23,702,663	\$8,947,680
2261	S Blue Wing/I-37 Access Rd	US 181 S	Southton Rd	\$14,901,496	\$5,337,425
2263	S Blue Wing Rd	FM 1937	Southton Rd	\$34,327,237	\$12,295,346
2264	Campbellton/S Loop 1604	FM 1937	?	\$15,021,671	\$5,380,469
2265	FM 1937	Del Lago Pkwy	S Loop 1604	\$57,335,944	\$21,047,570
2272	Mauermann Rd	Applewhite Rd	Pleasanton Rd	\$26,836,873	\$10,123,398
2277	SH 16 S	Watson Rd	Palo Alto Rd	\$27,540,698	\$21,267,807
2279	Fischer Rd	I-35	Somerset Rd	\$11,031,809	\$3,951,379



Project Number	Roadway Name	Start	End	Projected Cost	Projected Quick - Build Cost
2285	SE/SW Loop 410 Access Road	Commercial Ave	E Chavaneaux	\$17,921,380	\$6,765,264
2295	I-10 Access Rd	S of Boerne Stage Rd	Dominion Dr	\$11,843,372	\$4,470,835
3030	Powerline Trail	Pickwell Dr	Salado Creek Greenway	\$3,449,349	\$1,941,825
3041	Aviation Landing	City Base Lndg	Global Way	\$6,062,121	\$2,682,288
3043	Greenfield Parking Lot Route	City Base landing	Goliad Rd	\$2,559,454	\$916,746
3047				\$0	\$0
3048	Old Corpus Christi Rd; Graf Rd	SE Military Dr	Graf Rd	\$7,590,626	\$4,819,749
3052	Acequia Rd	Mission Rd	E Ashley Rd	\$1,820,181	\$1,405,602
3063	W US 90	North St	Springvale Dr	\$1,936,194	\$1,495,191
3076	Millers Pond Park Trail;	Medina Base Rd	Bright Valley Dr	\$10,384,727	\$8,019,418
3078	SW Loop 410 Access Rd	Railroad	Quintana Rd	\$5,318,024	\$4,106,748
3102	Gillette Blvd	Palo Alto Rd	Poteet Jourdanton Fwy	\$2,058,918	\$1,589,962
3111	W Chavaneaux; SE Loop 410 Access Rd	S Zarzamora St	Walhalla Ave	\$18,349,015	\$14,169,696
3134	Cantrell Dr; I-35 Access	Zarzamora St	Logwood Ave	\$7,752,676	\$3,191,643
5002	Baywater Stage	Boerne Stage	Boerne Stage Rd	\$5,008,470	\$1,793,936
5003	Boerne Stage	I-10 W	Baywater Stage	\$18,127,074	\$6,842,913
5004	Cielo Vista Dr	I-10 W	Hermosa Hill	\$18,082,404	\$6,476,764
5022	Bandera Rd; FM 1560 N	Hausman Rd	Braun Rd	\$23,426,398	\$18,090,613
5023	FM 1560 N	Braun Rd	Shaenfield Rd	\$10,585,735	\$8,174,643
5025	Beverly Hills; Sunset Ranch; Paloma Dr; Big Tex Trail; Boots On; Long Ridge	FM 1560 N	Swayback Ranch	\$19,669,816	\$13,269,753
5026	Swayback Ranch	Galm Rd	Big Tex Trail	\$8,668,178	\$6,693,844
5027	Mill Park	Galm Rd	Swayback Ranch	\$9,784,931	\$3,504,771
5031	Kallison Vista; Ranch Vw	Culebra Rd	Culebra Rd	\$24,019,215	\$18,548,405
5033	Old FM 471 W; Sawmill Glade	Culebra Rd	Culebra Rd	\$17,027,929	\$13,149,511
5034	FM 1560 N	Galm Rd; Shaenfield Rd	Culebra Rd	\$13,166,924	\$10,167,920
5035	Shaenfield; Wildhorse Pkwy	FM 1560 N	W FM 1604 N	\$14,853,721	\$11,470,518
5038	Westwood Loop	W Loop 1604 N	Alamo Ranch Pkwy	\$10,385,063	\$3,719,727



Project Number	Roadway Name	Start	End	Projected Cost	Projected Quick - Build Cost
5042	Lone Star Pkwy	Alamo Ranch Pkwt	Cottonwood Way	\$24,183,370	\$18,675,171
5043	Talley Rd	Culebra Rd	Tamaron Pass	\$23,331,687	\$18,017,474
5044	Talley Rd	Tamaron Pass	Wiseman Blvd	\$36,397,581	\$28,107,375
5045	Alamo Pkwy	Alamo Ranch Pkwy	Wiseman Blvd	\$23,413,316	\$18,080,511
5050	Potranco Rd	SH 211	Potranco Rd	\$23,698,618	\$18,300,830
5051	Potranco Rd	Grosenbacher Rd	SH 211	\$45,377,091	\$35,041,640
5053	N Grosenbacher Rd; 40549	Wiseman Blvd	Potranco Rd	\$25,610,153	\$19,776,978
5056	Grosenbacher Rd	Potranco Rd	Grosenbacher Rd	\$11,071,243	\$3,965,503
5057	Grosenbacher Rd; Marbach Rd	Grosenbacher Rd	Wentwood Run	\$11,833,615	\$4,238,570
5058	Marbach Rd	Marbach Rd	River Crest	\$31,566,295	\$12,060,422
5059	Spurs Ranch	W Loop 1604 S	W US 90	\$13,834,944	\$7,876,394
5060	Luckey Hill	Luckey Riv	Luckey Hill	\$3,694,378	\$1,323,254
5062	Old Pearsall Rd	Southwest High School	SW Loop 410	\$29,234,504	\$22,575,819
5069	Prue Rd	Marbach Rd	US 90	\$16,983,993	\$6,257,351
5070	Raven Field Dr; S Ellison Dr	Prue Rd	Adams Hill Dr	\$15,359,252	\$5,798,069
5071	Big Wolf Creek; Falcon Wolf	W Loop 1604 S	Marbach Rd	\$4,410,988	\$2,741,440
5075	Drainage Trail	SW Loop 410	Hunt Lane	\$6,092,045	\$4,704,472
5091	Seascape Dr	Cougar Chase	Tiger Path	\$3,294,055	\$1,179,866
5123	Stonecroft; Quincy Lee Dr;	Quincy Lee Dr	Stonefield Place	\$13,700,489	\$5,171,891
5124	Bandera Rd	Quincy Lee Dr	Braun Rd	\$45,207,248	\$17,065,593
5126	Bandera Rd; NW Loop 410 Acess Rd	NW Loop 410	Huebner Rd	\$50,264,531	\$19,433,576
5128	Eckhert Rd; Snow Flake Dr	Snow Flake Dr	Abe Lincoln	\$14,820,393	\$11,444,782
5134	Evening Sun Dr; Forest Meadow	Evers Rd	Evening Sun Dr	\$1,615,625	\$1,036,852
5135	Balky Dr	Huebner Rd	Balky Dr	\$979,883	\$551,629
5165	Kyle Seale Pkwy	Prue Rd	Kyle Seale Pkwy	\$8,928,128	\$3,197,881



Project Number	Roadway Name	Start	End	Projected Cost	Projected Quick - Build Cost
5168	Champion Gate; Kyle Seale Pkwy; Pvt St at 8000 Loop 1604W	N Loop 1604 W	N Loop 1604 W	\$26,335,588	\$9,432,893
5169	Bamberger Trl; Bamberger Way	Woller Rd	Babcock Rd	\$2,381,951	\$1,340,929
5178	Scenic Loop; Old Bandera	Bandera Rd	Babcock Rd	\$50,302,501	\$18,017,373
5182	Appelwhite Meadow; Hunters Pond	Zarzamora St	Rancho Grande	\$12,970,213	\$8,106,466
5183	E Travis	Avenue E	Jefferson	\$2,486,554	\$938,666